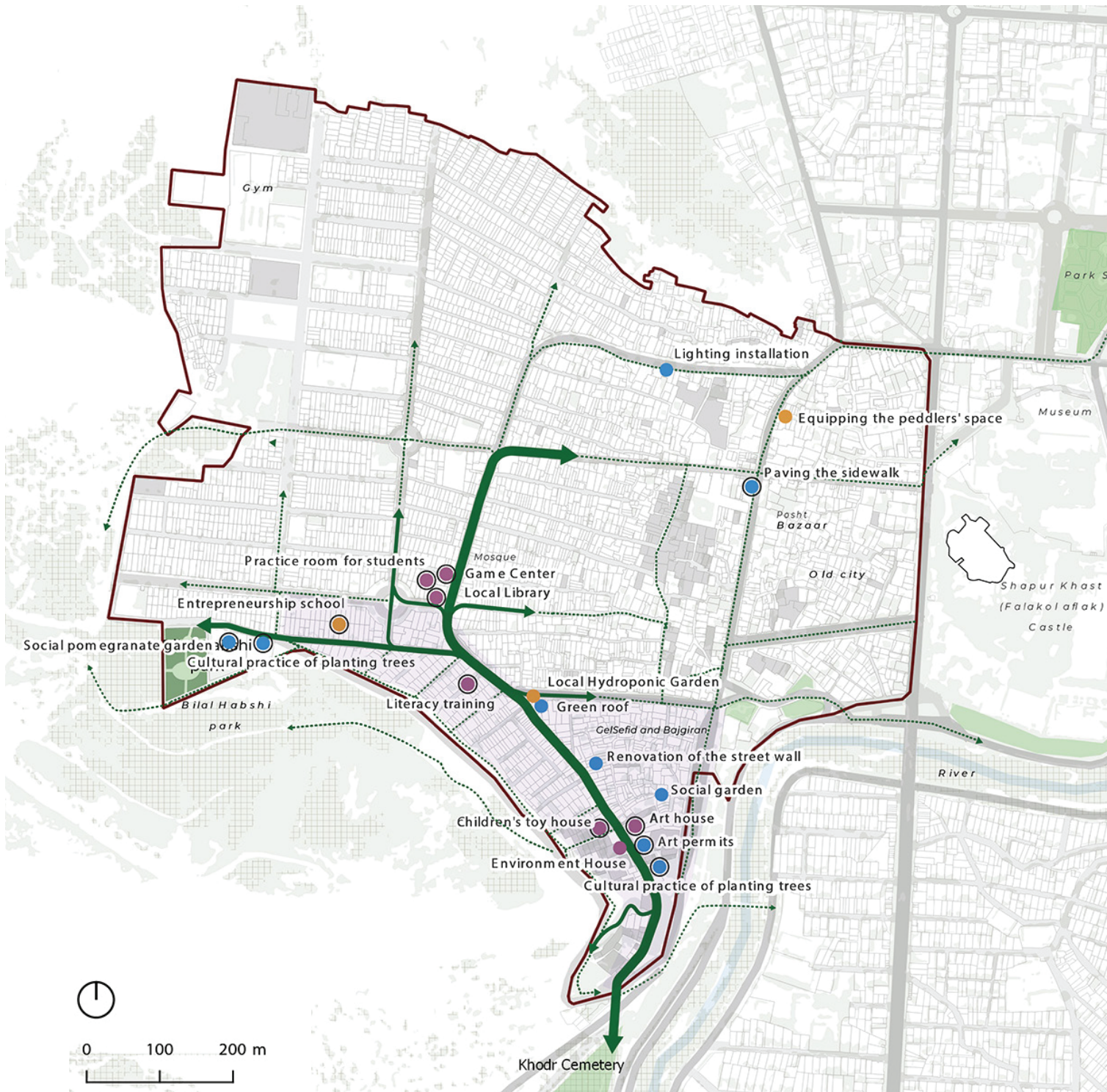


NEW NBS KHORRAMABAD

Based on:
URBiNAT D2.7 Healthy Corridor
Urban Plans for Follower Cities

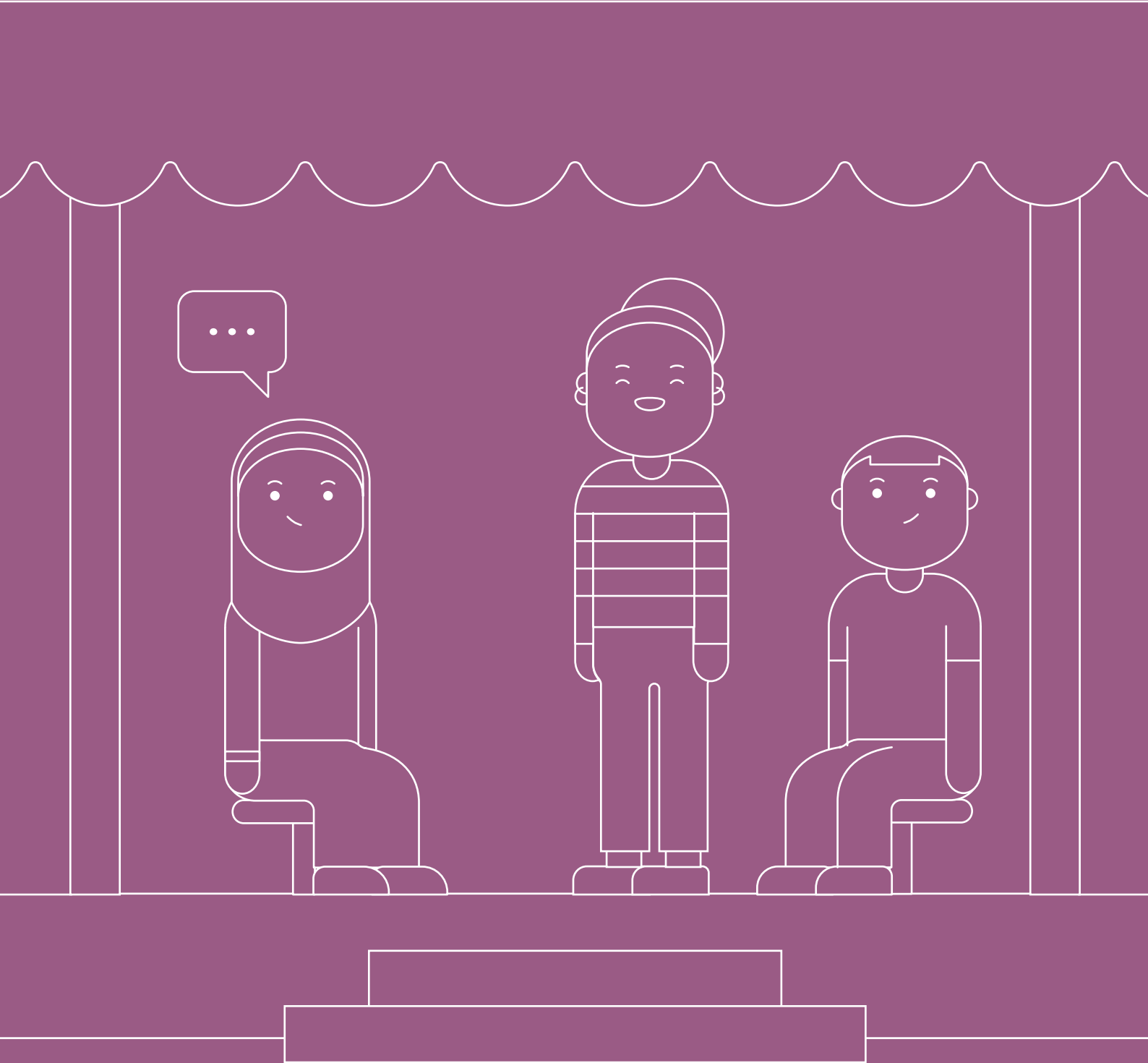


-  GelSefid and Bajgiran
-  Vacant plots
- NBS
-  culture & sports
-  environment & public space
-  social economy & solidarity practices
-  Implemented NBS



Healthy Corridor urban plan. Credits: Ribal Aman Eddine.

Culture and sports





1. Entertainment and game centre

Positive aspects/challenges

POSITIVE ASPECTS

- Increasing the level of social vitality
- Acquaintance and communication of teenagers from different neighbourhoods with each other
- Practising responsibility
- Having a suitable place for equipping and setting up the game centre

CHALLENGES

- Maintenance of play equipment
- Maintenance of the game centre
- Acceptance of teenagers from disadvantaged neighbourhoods by others

Participation process to use the NBS

CO-DIAGNOSTIC

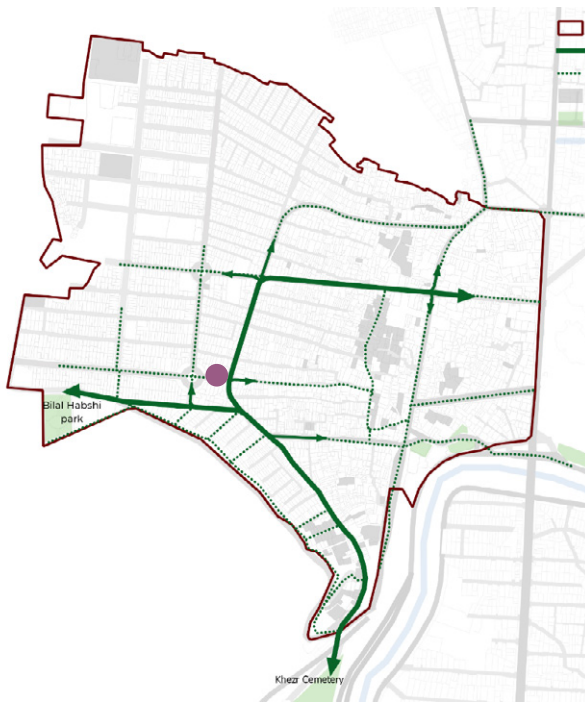
During the co-diagnostic that was done by the students through photo-voice, it was pointed out that there is not a suitable place for teenagers and children to spend their free time. Also, in the questionnaire, one of the things mentioned by the residents was the lack of entertainment per capita in the neighbourhoods.

CO-SELECTION & CO-DESIGN

In participatory workshops and with focused groups of children, teenagers and young people, the game centre was suggested as a place to spend leisure time in the cultural centre of Posht-Bazaar neighbourhood, and also equipment and play equipment were also purchased by the URBiNAT team with the suggestion of focused groups.

Best Practices and References

Fekrkadeh game centre <https://fekrkade.com>



Description

This venue is designed for teenagers and young adults to spend their free time, promoting teamwork through group games. It was equipped with a tennis table, dart board, air hockey, table football, chess tables, and puzzle games, all co-selected with the users, who were also involved in the centre's upkeep and equipment selection, encouraging a sense of responsibility.

2. House of Art

Description

This venue serves as a gathering place for the community's musicians and marks a step towards affirming their identity. It significantly contributes to improving the social health of Khorramabad city.

Positive aspects/challenges

POSITIVE ASPECTS

- Giving identity to excluded groups
- Creating a place to perform artistic activities.
- Economic revenue for residents

CHALLENGES

- The possibility of stopping the participation of the municipality to provide the place for art house
- Other residents' acceptance of the proposed programs

Participation process to use the NBS

CO-DIAGNOSTIC

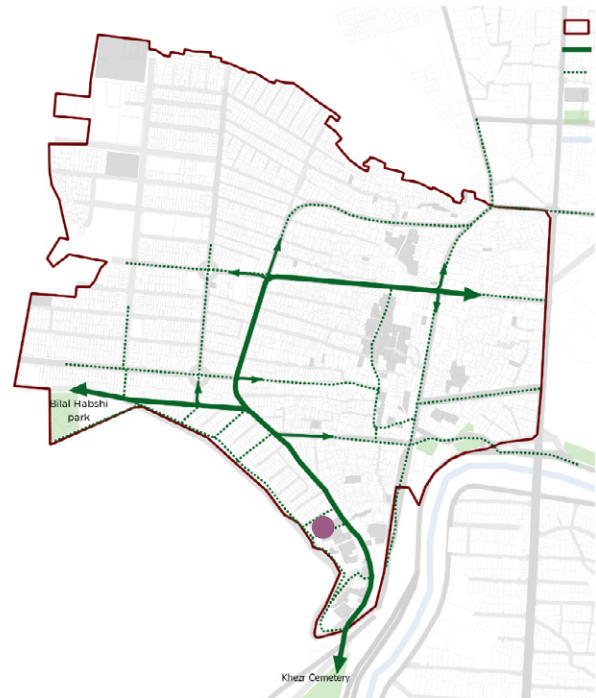
During the observations made by the specialists of the URBiNAT team of Iran, the issue of the rejection of some social groups in the neighbourhoods under investigation was very significant, and conducting face-to-face interviews added to the truth of this issue.

CO-SELECTION & CO-DESIGN

In the participatory workshops that were held with the focus groups, the issue of setting up the art house was proposed by the excluded groups, and after examining the issue in the advisory boards the art house was launched.

Best Practices and References

NA





3. Art insurance

Positive aspects/challenges

POSITIVE ASPECTS

- Giving identity to excluded groups
- Use of healthcare services

CHALLENGES

- The insurance issuance process is time-consuming
- Correct selection of qualified persons

Participation process to use the NBS

CO-DIAGNOSTIC

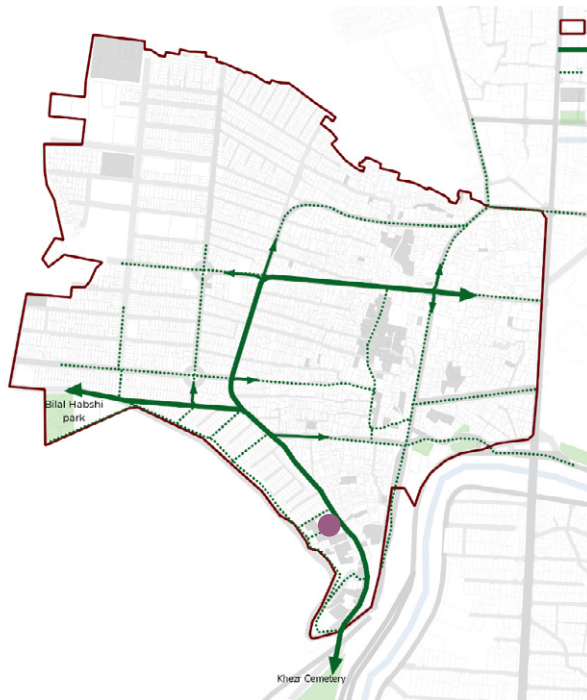
During the observations made by the specialists of the URBiNAT team of Iran, due to the exclusion of some social groups and as a result of not having suitable jobs, having artistic insurance due to the fact that this group is a musician was followed up by the URBiNAT Iran Group.

CO-SELECTION & CO-DESIGN

The examining the issue in advisory boards, art insurance was issued.

Best Practices and References

NA



Description

Several health insurance cards have been issued to Luti artists, encouraging their involvement in music and art. This allows them to benefit of free medical services, thus enhancing their overall welfare.

4. Local Library

Description

Considering the desire of the members of the game centre to create a local library, a library for the use of children, teenagers and young people from deprived neighbourhoods was opened in the cultural centre of the neighbourhood.

Positive aspects/challenges

POSITIVE ASPECTS

- Increasing participation among children and adolescents
- Increasing the level of knowledge

CHALLENGES

- Maintenance of books
- Appropriate timing for use by different age groups
- Choosing the right place for library

Participation process to use the NBS

CO-DIAGNOSTIC

Co-diagnostic by questionnaire showed that lack of local libraries is one of the most significant points for students.

Co-selection & Co-design

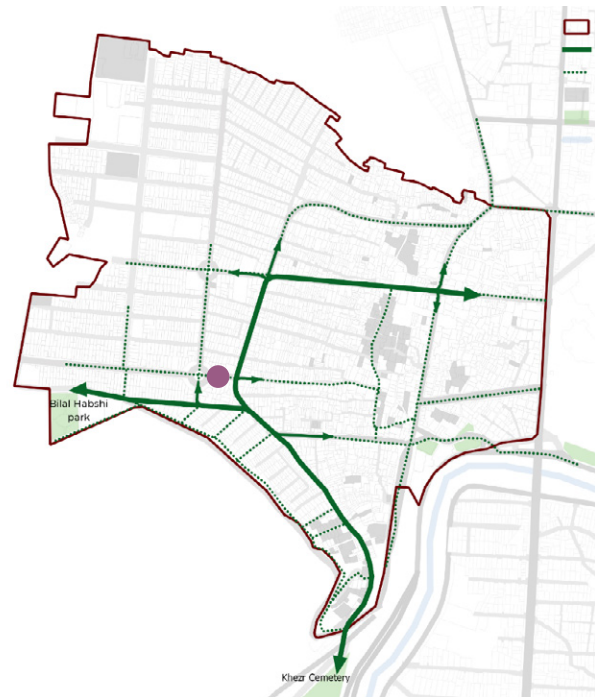
In participatory workshops held with focused groups, the topic of setting up a Local library was suggested by the participants. Then, after consulting with professors, suitable books for children, teenagers and young adults as well as girls and boys were selected. The location of the library was also chosen by the opinion of the participants who were children, teenagers, and young people of the neighbourhood. The library was opened on March 24, 2024.

Best Practices and References

NA



Local library of the cultural centre of Posht-Bazaar equipped by URBiNAT.





5. Literacy training

Description

The training aims to improve literacy among citizens, especially illiterate middle-aged residents and teenagers who dropped out from school.

Positive aspects/challenges

POSITIVE ASPECTS

- Improving the level of literacy
- Increasing the level of knowledge

CHALLENGES

- Maintenance of books
- Lack of desire to learn literacy among the elderly
- Choosing the right place

Participation process to use the NBS

CO-DIAGNOSTIC

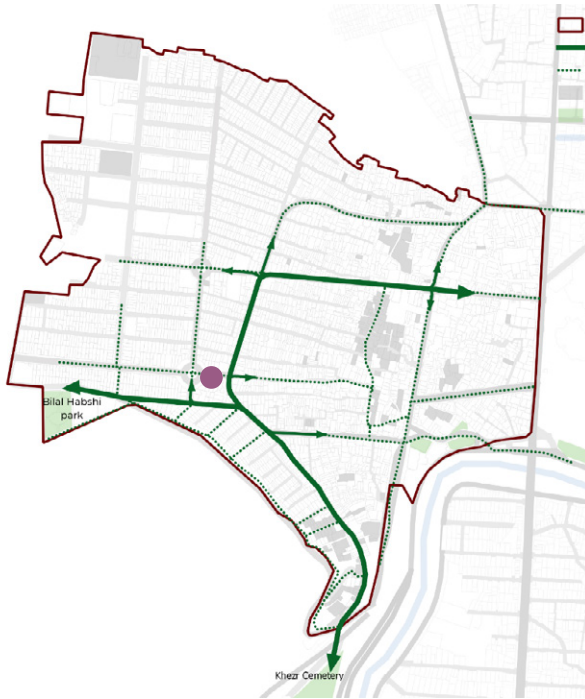
Co-diagnostic by questionnaire showed Illiteracy among the elderly.

CO-SELECTION & CO-DESIGN

After collecting a questionnaire from the residents, the issue of illiteracy among the elderly was brought to the attention of the URBINAT team, and in order to improve the level of local literacy, literacy classes were organized at the request of some of the elderly.

Best Practices and References

NA



6. Children's toy house

Description

Due to the poverty of the residents of the neighbourhoods under investigation and the lack of toys for children to play, the creation of a playroom in the building of the centre of the neighbourhood was put on the agenda. It also creates the opportunity for children to interact and socialize with each other, which is a very good opportunity for children considering the fact that most families have only one child and the lack of opportunities to play with children of the same age.

Positive aspects/challenges

POSITIVE ASPECTS

- Play and interaction opportunity for local children
- Interaction with children from different neighbourhoods

CHALLENGES

- Choosing the right place

Participation process to use the NBS

CO-DIAGNOSTIC

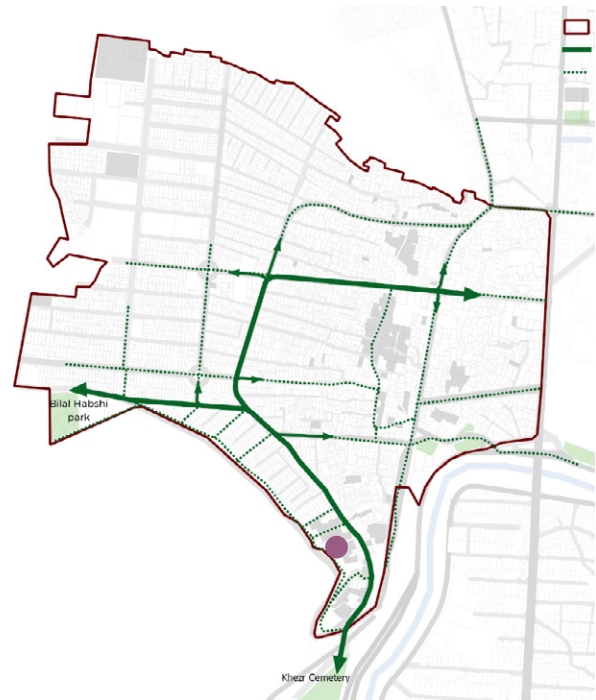
Co-diagnostic shows that children don't have enough play spaces.

CO-SELECTION & CO-DESIGN

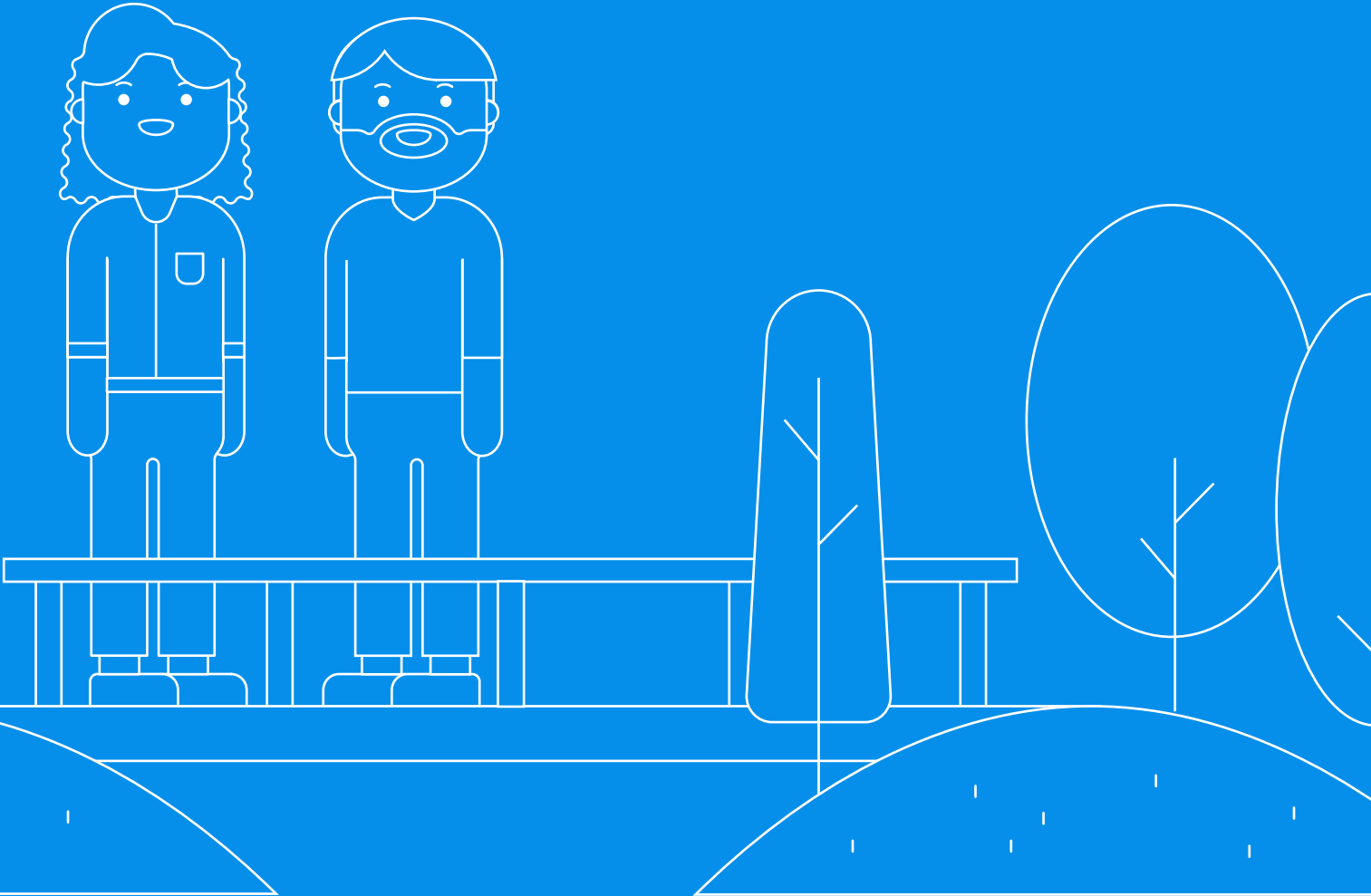
This NBS was proposed during the co-design workshops.

Best Practices and References

NA



Public Space and Nature



7. Cultural practice of planting trees

Description

Planting fruit trees can greatly help the economy of households in addition to improving the beauty of the environment. The planned cultural practice of planting pomegranate trees entails group work from the different segments of the population, who are to join efforts for the improvement of the green space in their neighbourhoods and allowing additional economic income for the residents.

Positive aspects/challenges

POSITIVE ASPECTS

- Increase of green space per capita
- Visual beauty
- Monetization for residents

CHALLENGES

- Maintenance of trees
- Choosing the right species of trees
- Choosing the right place for planting

Participation process to use the NBS

CO-DIAGNOSTIC

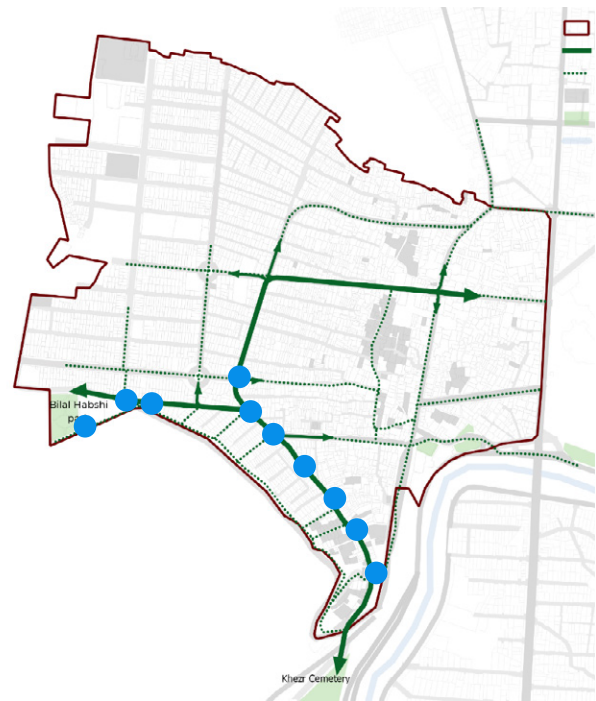
Co-diagnostic by walk-through with the participation of local residents showed that the issue of lack of green spaces is one of the most significant points to be investigated in deprived areas.

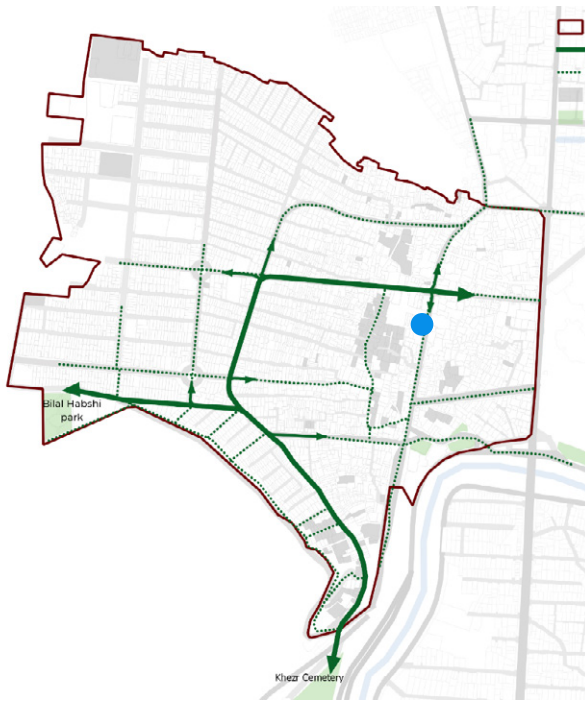
CO-SELECTION & CO-DESIGN

In participatory workshops held with focused groups, the topic of planting trees was suggested by the participants both in terms of per capita improvement of green spaces and in terms of monetization. Then, after examining the matter with agricultural experts in the General Directorate of Agriculture, the pomegranate trees were selected for planting as a native tree resistant to air pollution.

Best Practices and References

NA





8. Paving the sidewalk

Description

Paving the sidewalk of the old bazaar, to beautify and facilitate the movement of pedestrians and users of the old bazaar and at the request of residents, visitors, and vendors. the pavement project around the old bazaar was conducted in cooperation with the municipality.

Positive aspects/challenges

POSITIVE ASPECTS

- Improving the quality of urban space
- Urban walkability

CHALLENGES

- Needs the participation of the municipality
- High budget

Participation process to use the NBS

CO-DIAGNOSTIC

Co-diagnostic by questionnaire showed people are unsatisfied with quality of sidewalks .

CO-SELECTION & CO-DESIGN

After holding meetings with the municipality, the project of paving the street leading to the old market was put on the agenda.

Best Practices and References

NA

9. Lighting installation

Description

Lighting installation, to facilitate the traffic of pedestrians and users of the old bazaar and the request of residents, visitors, and sellers. The project of installing lighting around the old bazaar was conducted in cooperation with the municipality.

Positive aspects/challenges

POSITIVE ASPECTS

- Improving the quality of urban space
- Security at night

CHALLENGES

- Attracting the participation of the municipality
- High budget

Participation process to use the NBS

CO-DIAGNOSTIC

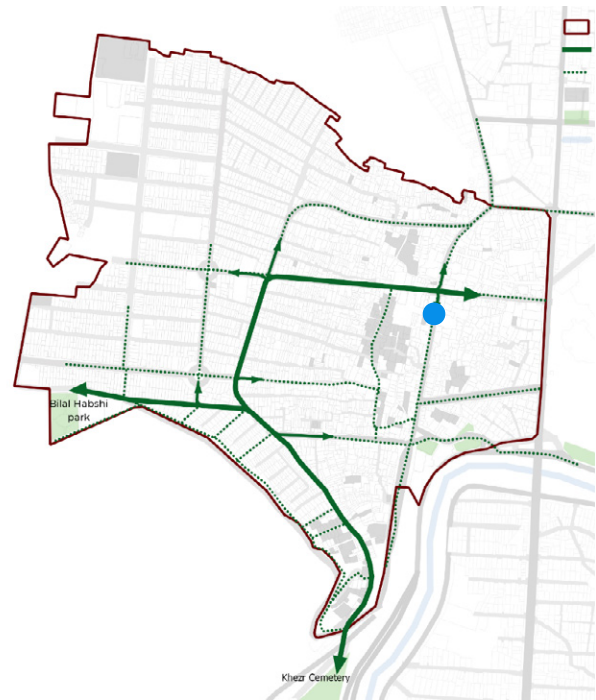
Co-diagnostic by questionnaire showed people are unsatisfied with quality of public space .

CO-SELECTION & CO-DESIGN

After holding meetings with the municipality, the project of paving the street leading to the old market was put on the agenda.

Best Practices and References

NA





10. Painting neighbourhood walls

Description

Considering the physical dilapidation of deprived neighbourhoods in Khorramabad and the lack of a beautification program from the municipality and the desire of residents to participate in the beautification projects of their neighbourhood, the project of painting the wall of one of the local streets was put on the agenda.

Positive aspects/challenges

POSITIVE ASPECTS

- Improving the quality of urban space
- Playful experience

CHALLENGES

- Choosing the right places

Participation process to use the NBS

CO-DIAGNOSTIC

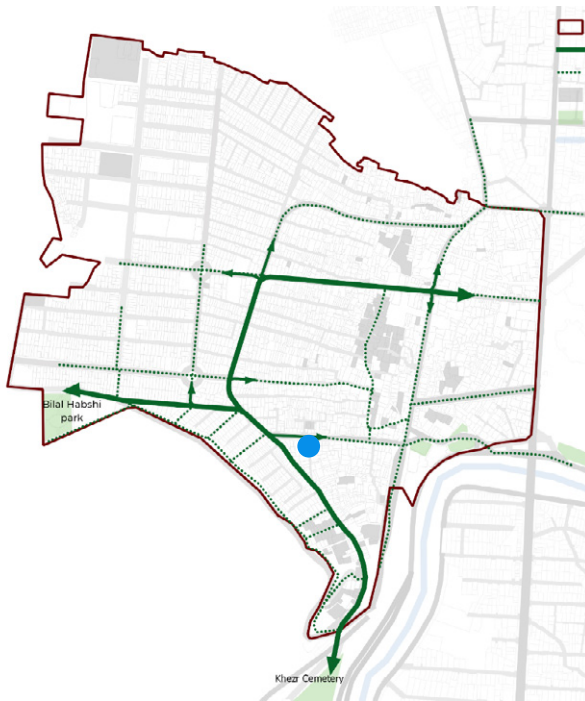
Co-diagnostic by questionnaire showed people are unsatisfied with quality of public space.

CO-SELECTION & CO-DESIGN

Choosing the wall was through the co-design workshops. Co-implementation with the community

Best Practices and References

NA



11. Green roof

Description

Due to the lack of green space per capita, the creation of a green roof was taken into consideration by the URBiNAT Iran team due to the expressed desire of some local residents.

Positive aspects/challenges

POSITIVE ASPECTS

- Improving liveability conditions
- Due to the possibility of planting edible plants, this issue can help the household economy

CHALLENGES

- High budget and skills

Participation process to use the NBS

CO-DIAGNOSTIC

The co-diagnostic shows the need to increase urban greenery.

CO-SELECTION & CO-DESIGN

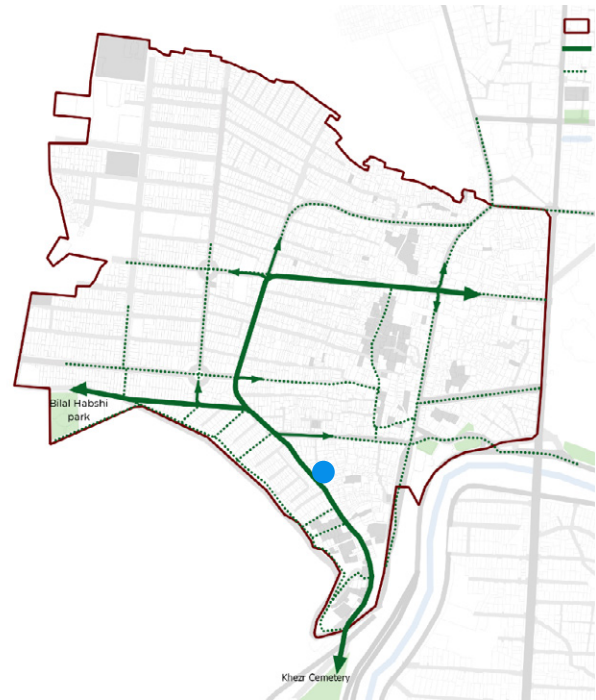
The project was proposed by local residents during the co-design workshops.

Best Practices and References

NA

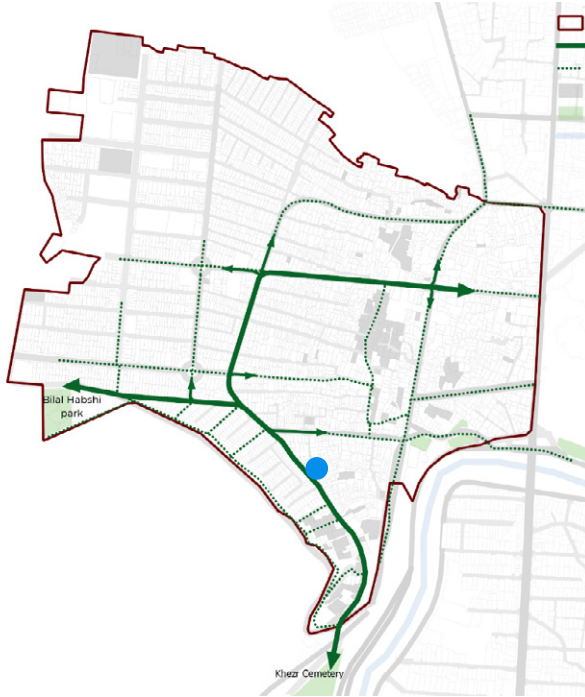


Example of a green roof implementation





Example of a hydroponic garden. Source: www.sgaonline.org.au



12. Local hydroponic garden

Description

Due to the high level of unemployment in the studied areas and the willingness of local residents to work in hydroponic gardens, the creation of hydroponic gardens in some of the houses in the deprived neighbourhoods was proposed.

Positive aspects/challenges

POSITIVE ASPECTS

- Improving the quality of urban space
- Work opportunities for residents

CHALLENGES

- Technical skills required
- Choosing the right place

Participation process to use the NBS

CO-DIAGNOSTIC

Co-diagnostic by questionnaire showed people are unsatisfied with quality of public space, as well as a high level of unemployment.

CO-SELECTION & CO-DESIGN

These gardens were proposed by residents during the co-design workshops.

Best Practices and References

NA

Social economy and solidarity practices





13. Entrepreneurship school

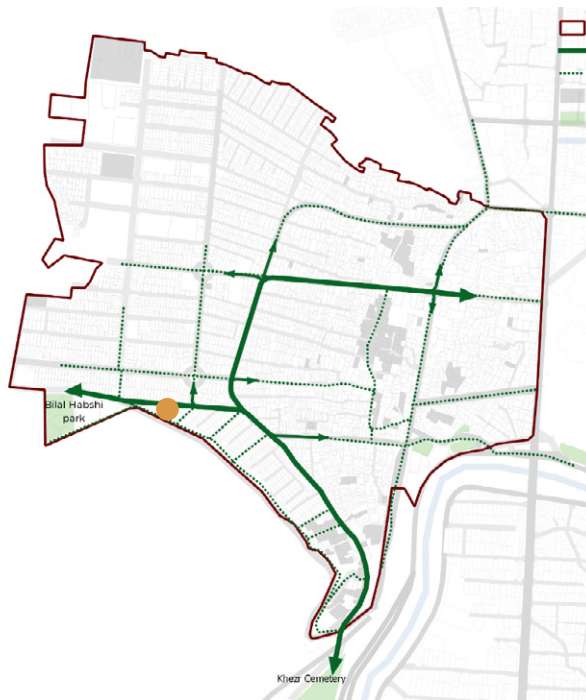
Positive aspects/challenges

POSITIVE ASPECTS

- Skill training for residents
- Reduction of fake jobs
- Increasing the possibility of employment
- Announcing the cooperation of the General Technical and Professional Administration to provide the required coaches

CHALLENGES

- Lack of a suitable place to hold trial classes
- Choosing the correct subject of the classes according to the diverse needs of the residents
- Connecting the learned skills to the labour market



Participation process to use the NBS

CO-DIAGNOSTIC

In the process of co-diagnostic in the preparation of the questionnaire, one of the things emphasized by many residents was unemployment and not having enough income. Also, in collaborative workshops with focus groups, it was pointed out that they do not have the necessary skills to find a suitable job.

CO-SELECTION & CO-DESIGN

In collaborative joint design workshops that were held with the participation of focused groups, the solutions extracted from the co-diagnostic and co-selection workshops were re-examined for expressing opinions. Also, by holding several meetings with advisory boards, the implementation process of nature-based solutions was examined.

Best Practices and References

Parto entrepreneurship school (<https://partoschool.org>)

Description

In order to train skills and reduce unemployment, an entrepreneurship school was established near Bilal Habashi park, between Posht-Bazaar and Bajgiran. A pilot project consisting of trial classes was initiated in a temporary location. Training topics were co-selected based on the requests and suggestions of the residents, including sewing local handcrafts, electronics, and plumbing training, with the aim of receiving feedback from attendees and the local community. Subsequently, the project team began searching for a suitable long-term location for the entrepreneurship school.

14. Equipping a street-traders' space

Description

Near the old bazaar of Khorramabad, many street-traders are selling various products such as fruits, vegetables, old goods, etc. Creating a suitable space for organizing street-traders has been one of the demands of residents and visitors of the old market. This NBS is put on the agenda for implementation.

Positive aspects/challenges

POSITIVE ASPECTS

- Organizing street-traders' places
- Increasing social justice

CHALLENGES

- Needs the participation of the municipality
- High budget
- Choosing the right place

Participation process to use the NBS

CO-DIAGNOSTIC

Co-diagnostic by questionnaire showed people asked for creating a suitable space for organizing street-traders.

CO-SELECTION & CO-DESIGN

After holding meetings with the municipality, the project of paving the street leading to the old market was put on the agenda.

Best Practices and References

NA



Example of a street-traders' space

