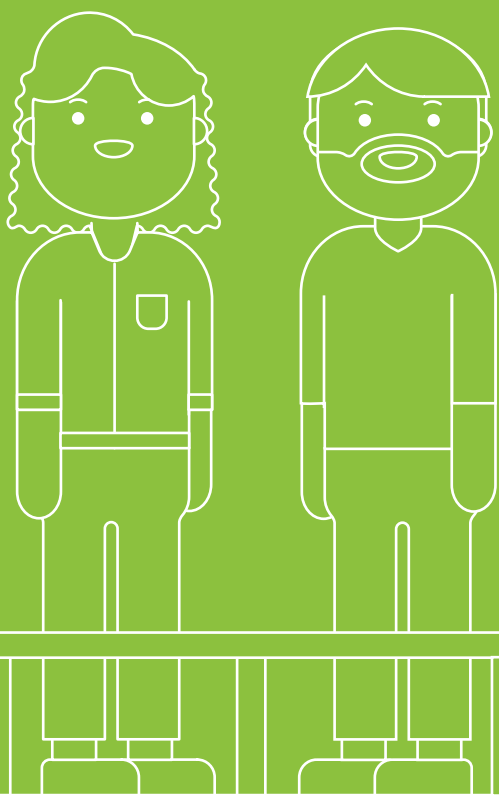


NEW NBS PORTO

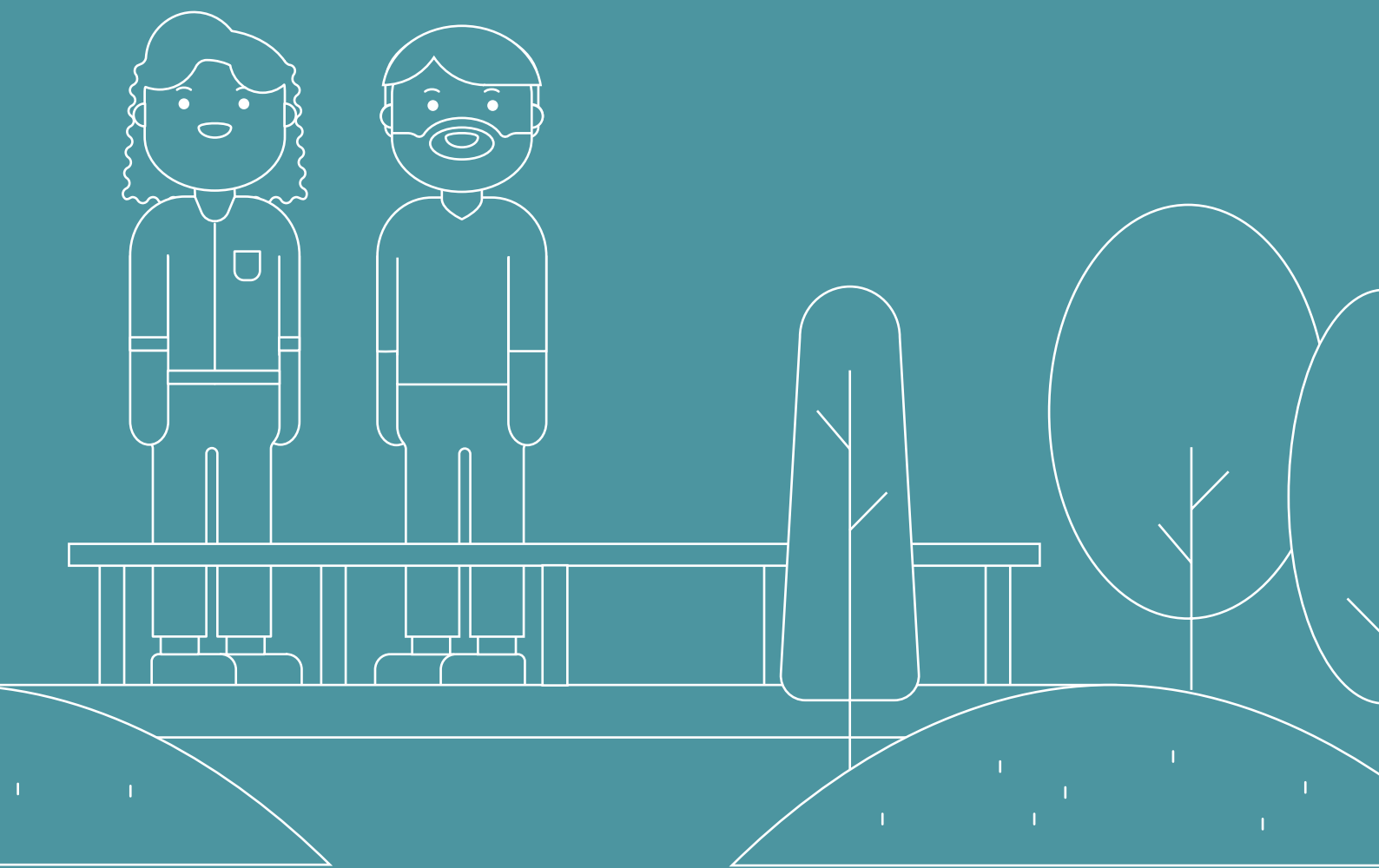


Based on:
URBiNAT D4.2 Healthy
Corridor Concept





Public Space





01. Outdoor Space for sports and leisure activities

(Ágora/CMP) that promote Tai Chi, Yoga, Pilates classes in various parks in the city; *Domingos em Forma* ("Sundays in form"), one of the AIIA program (DMCS/CMP); and, more recently, the programme *Desporto no bairro* ("Sport in the neighbourhood").

CHALLENGES

- Need of a flat and shaded area in the intervention area, where the topography is currently very complex and heterogeneous.

Participation process to develop the NBS

CO-DIAGNOSTIC

The need for green areas and its connection to leisure and sports activities was identified through several methods and activities developed during the local diagnostic.

CO-SELECTION & CO-DESIGN

The proposal of "outdoor space for physical exercise" was proposed by Alberto, a yoga teacher resident in the study area and co-designed during several participatory activities:

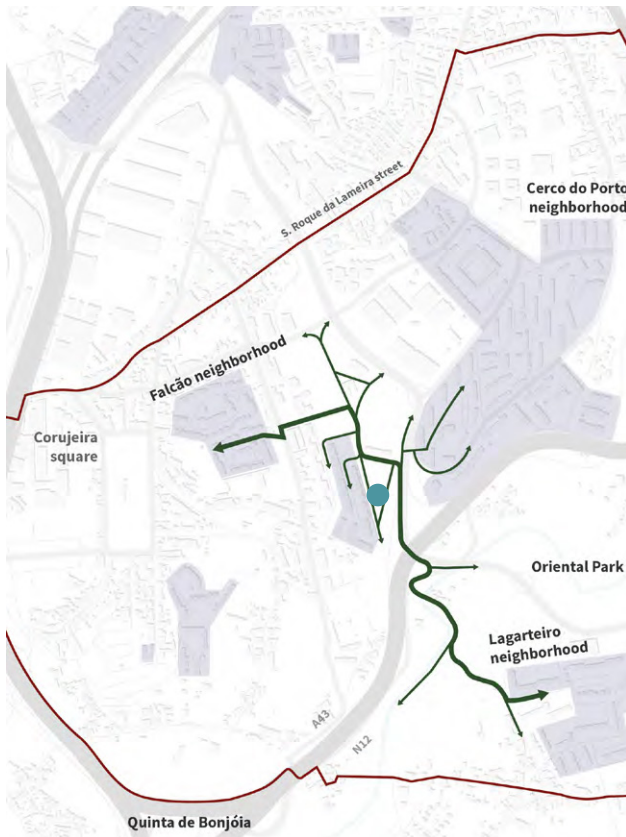
- Citizen workshop with adults (15.01.2020)
- Face-to-face interview with local facilitator (15.01.2020)
- Citizen's video (26.06.2020)
- Workshop with citizens and municipal technicians (14.07.2020)
- Online workshop to co-design four NBS (07.11.2020)

State of the art: The proposal is already integrated in the healthy corridor preliminary study as part of multifunctional clearings.

Best Practices and References

Porto Oriental and Occidental park, design by Sidónio Pardal

Asprela Park, designed by Paulo Farinha Marques and José Miguel Lameiras, et al.



Description

Proposal to create a green space that favours the development of physical and recreational activities (namely Yoga and meditation). This outdoor space is also intended to be used for other purposes, such as board and traditional games.

Positive aspects/challenges

POSITIVE

- Promotion of sports and leisure activities and a more physically active population in the study area;
- Contribution to increase the appropriation of the public space;
- Consistent with ongoing local programs or initiatives organized by the Municipality of Porto, namely the municipal company *Agora – Cultura e Desporto do Porto, EM*, with the possibility to create synergies namely with: *Dias com Energia* ("Days with energy")

02. Improvement of connective path between neighbourhoods and facilities



Description

This proposal aims to improve existing pedestrian paths that are widely used by the population to reach Cerco do Porto / Falcão / Lagarteiro / Campanhã cemetery / Falcão Primary School/ Oliveira urban garden and others. The existing main path is not formalised, performing as an obstacle and source of insecurity for pedestrians. At the same time, the frequency of use by the residents proves the importance in their daily lives as a pedestrian connection.

Positive aspects/challenges

POSITIVE

- Formalize and requalify a daily route used by the population that currently does not meet the conditions of safety or comfort;
- Opportunity to improve lighting, urban furniture and maintenance of the path and surrounding areas;
- Ensure universal mobility issues. In the intervention area there are several associations that represent users with some type of disability, whose accessibility to some services is restricted due to the path;
- Possible synergy with other citizens ideas as well as with existing projects: Viewpoint reformulation next to Campanhã Cemetery; Meeting spot next to Falcão Primary School.

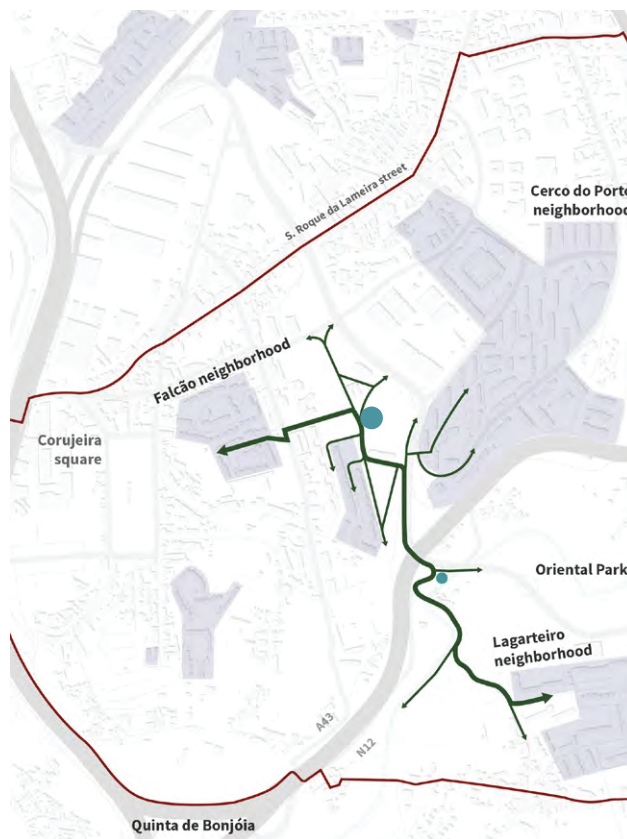
CHALLENGES

- Existing topography (not possible implement maximum regulated slope values in some parts of the paths);
- Articulation with the Mobility Municipal Strategy.

Participation process to develop the NBS

CO-DIAGNOSTIC

The need for more accessible paths for all citizens and better conditions of pedestrian paths and new connections were identified by methods and during participatory activities.



CO-SELECTION & CO-DESIGN

The Intervention in accesses and pedestrian connections was proposed by several participants during the co-design activities and is being tested by the design team:

- Walkthrough with children from 4 primary schools (Dec. 2019/Jan.2020)
- Walkthrough with adults (14.12.2019)
- Citizens workshop with adults (15.01.2020)
- Workshop and walkthrough with citizens and municipal technicians (14.07.2020)

State of the art: The proposal is already integrated in the healthy corridor preliminary study, improving existing informal paths and creation of new ones.

Best Practices and References

Rio Tinto pathway, designed by Sidónio Pardal



03. Meeting spot next to Falcão Primary School with sensory garden

Positive aspects/challenges

POSITIVE

- Give a new purpose to a vacant lot, by including it in the urban system;
- Mitigate spatial fragmentation;
- Opportunity to improve the reception area of Falcão Primary School;
- Opportunity to Improve pedestrian access along the lot, used by residents/students of the school, residents and users of the Oliveira Urban Garden;
- Possibilible synergy with a sensory garden and with play areas for children.

CHALLENGES

- Constraints in terms of existing topography (4 meters topographic difference);
- The complexity of the proposal is limited by the overall project budget.

Participation process to develop the NBS

CO-DIAGNOSTIC

The need for resting areas and areas for community' socialization and entertainment opportunities in the entrances of the schools, namely in Falcão Primary School, was identified in several workshops and methods during the local diagnostic.

CO-SELECTION & CO-DESIGN

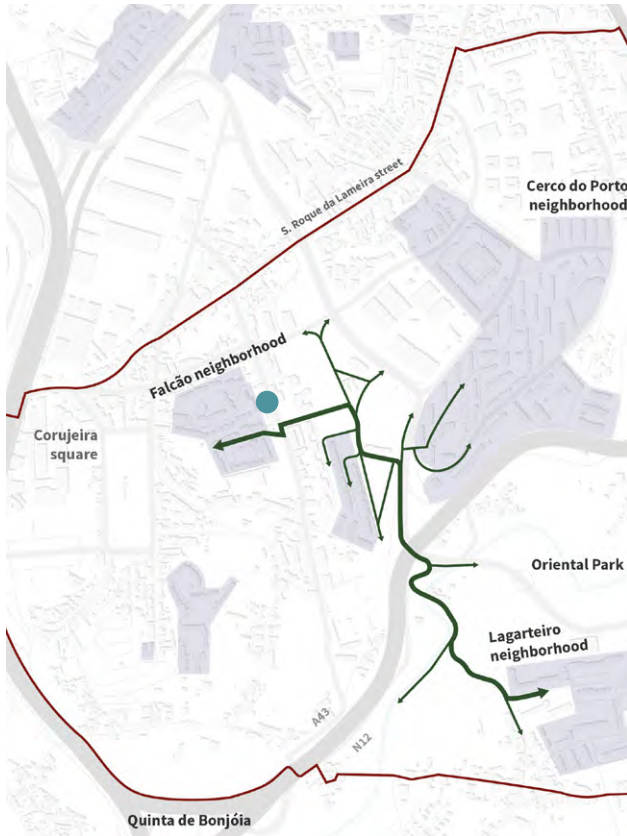
The Meeting spot next to Falcão Primary School with sensory garden was proposed by children and teachers of that same school and developed with other participants in several activities:

- Walkthrough with children of 4 primary schools (Dec. 2019/Jan.2020)
- Walkthrough with adults (14.12.2019)
- Citizens workshop with adults (15.01.2020)
- Workshop and walkthrough with citizens and municipal technicians (14.07.2020)

State of the art: The proposal is already integrated in the healthy corridor preliminary study.

Best Practices and References

N.A.



Description

The proposal refers to a vacant lot next to the Falcão Primary School with the goal of transforming it into a space for socializing and reception for students/families. Falcão Street has no shade or conditions for the accumulation of so many people as seen during the morning (when school starts) and in the afternoon (when school ends). The space next to the school could help to improve better reception conditions, host a playground, physical exercise equipment and/or a sensory garden (with shared maintenance with school students). This intervention aims to improve the relationship between the school and the community and achieve social cohesion.

04. Nature-based amphitheatre

Description

The proposal foresees the creation of an open-air amphitheatre to stimulate daily use for recreational, sports and cultural activities. This amphitheatre could be built through terrain modelling, taking advantage of existing topography, therefore creating a natural amphitheatre. It would contribute to social and cultural dynamization of the public space within the intervention area.

Positive aspects/challenges

POSITIVE

- Integration in cultural programs in the intervention area;
- Role in public space activation with territorial impact (transformation);
- Possible synergy with other citizens ideas: Cultural platform (campanh'up) and Initiative "Culture is also health";
- The use is compatible with other planned studies and initiatives.

CHALLENGES

- Development of specific terrain modelling studies
- Ensuring that the structure does not promote fragmentation or compromise range vision;
- Need for regular cleaning and maintenance

Participation process to develop the NBS

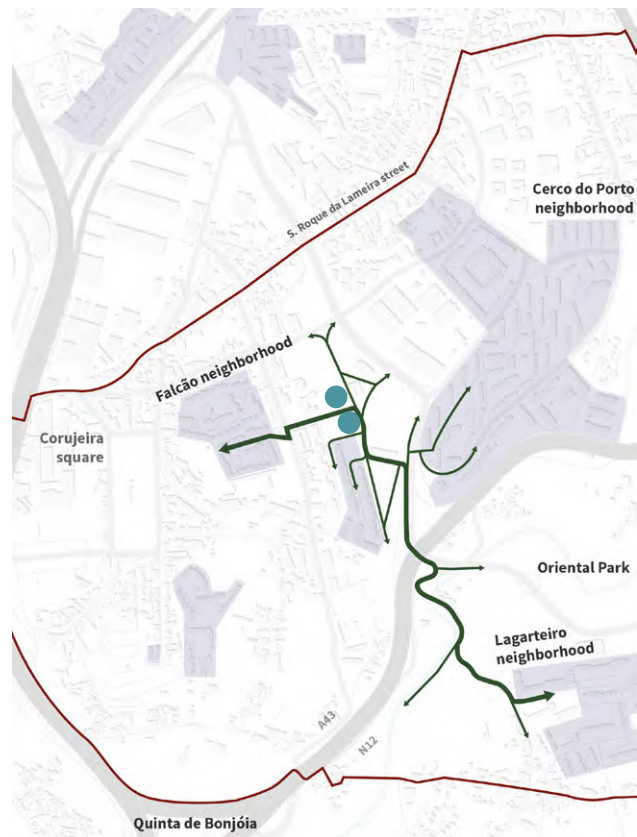
CO-DIAGNOSTIC

The need for community spaces for Socialization and entertainment opportunities were identified in the co-diagnostic activities and methods.

CO-SELECTION & CO-DESIGN

The Amphitheatre was proposed by a group of artists, namely Ricardinho Lopes and Marco, association OUPA and then developed in several participatory activities:

- Citizen workshop with adults (15.01.2020)
- Face-to-face interview with local facilitator (22.01.2020 and 13.02.2020)
- Citizen's video (26.06.2020)
- Workshop and walkthrough with citizens and municipal technicians (14.07.2020)
- Online workshop to co-design four NBS (07.11.2020)

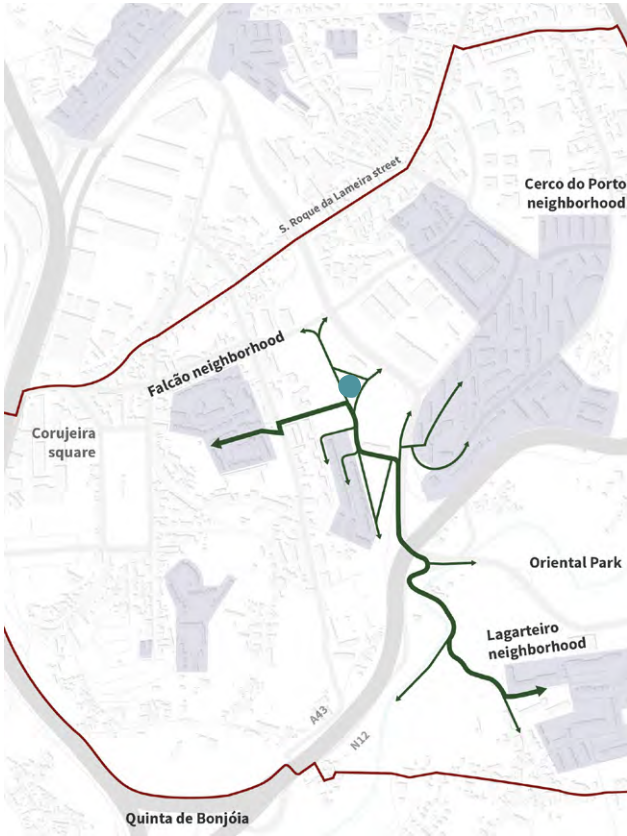


State of the art: The proposal is already integrated in the healthy corridor preliminary study.

Best Practices and References

Porto nature-based Amphitheatres in the Oriental and Occidental Park, designed by Sidónio Pardal

Siena urban garden in San Miniato, with an amphitheater in the little forest for concerts.



Description

The proposal intends to intervene in the existing ruin of old Quinta do Falcão house, to preserve the memory of Campanhã's farms, and rural past. The intervention also aims to solve its current conditions that are a source of insecurity for pedestrians crossing nearby. The space, once recovered, could hold artistic and cultural temporary events.

Positive aspects/challenges

POSITIVE

- Opportunity to solve a problem that influences local dynamics, and compromises the security of citizens;
- Recover/respect rural matrix of the former "Quinta do Falcão", an historic building recognized by the agricultural background of the area;
- Take advantage of this space to receive new activities/events;

05. Existing ruin recovery

- Enhance cultural heritage of Campanhã;
- Possible synergy with other citizens ideas as well as with existing projects: Artistic hangar; Nature-based amphitheatre, Educational Living Lab, Cultural Platform, Outdoor Space for Physical Exercise, Campmarket.

CHALLENGES

- Building is not classified urbanistically or under classification;
- Ruin is in an advanced state of degradation, revealing potential danger of collapse; the building current conditions do not guarantee safety conditions for any type of occupation/use. Deep rehabilitation works are needed to ensure safety conditions for occupation and/or use;
- Current occupation for the consumption of narcotic drugs and possible practices of illegal activities;
- The reconstruction of the ruin cannot be supported by the URBiNAT, requiring external investment.

Participation process to develop the NBS

CO-DIAGNOSTIC

The need to respect existing memory and to create community spaces for Socialization and entertainment opportunities was identified in the co-diagnostic activities and methods.

CO-SELECTION & CO-DESIGN

The intervention in the existing ruin was proposed by Carlos, association VisõesÚteis, and then developed in several participatory activities:

- Citizen workshop with adults (15.01.2020)
- Face-to-face interview with local facilitator
- Citizen's video (26.06.2020)
- Workshop and walkthrough with citizens and municipal technicians (14.07.2020)
- Online workshop to co-design four NBS (07.11.2020)

State of the art: The proposal is already integrated in the healthy corridor preliminary study. Unfortunately, there are no conditions for the total reconstruction of the building, within the scope of URBiNAT, but the rehabilitation and integration of the ruin in a safe and respectful way is possible.

06. Pedestrian connection to the Oriental Park

Description

This proposal aims at the reformulation of the access stairs to the Oriental Park. Currently this connection is not accessible to all citizens and the existing slope compromises pedestrian safety and intervisibility between spaces. The surrounding green space also requires more frequent management.

Positive aspects/challenges

POSITIVE

- Enable access for all (including for users with reduced mobility);
- Better integration of Rio Tinto walkway in the urban environment (connection to neighbourhoods and housing).

CHALLENGES

- Involvement of other entities for specific approval (IP – Infraestruturas de Portugal).

Participation process to develop the NBS

CO-DIAGNOSTIC

The need for more accessible paths for all citizens and better conditions of pedestrian paths and new connections were identified during several methods and participatory activities.

CO-SELECTION & CO-DESIGN

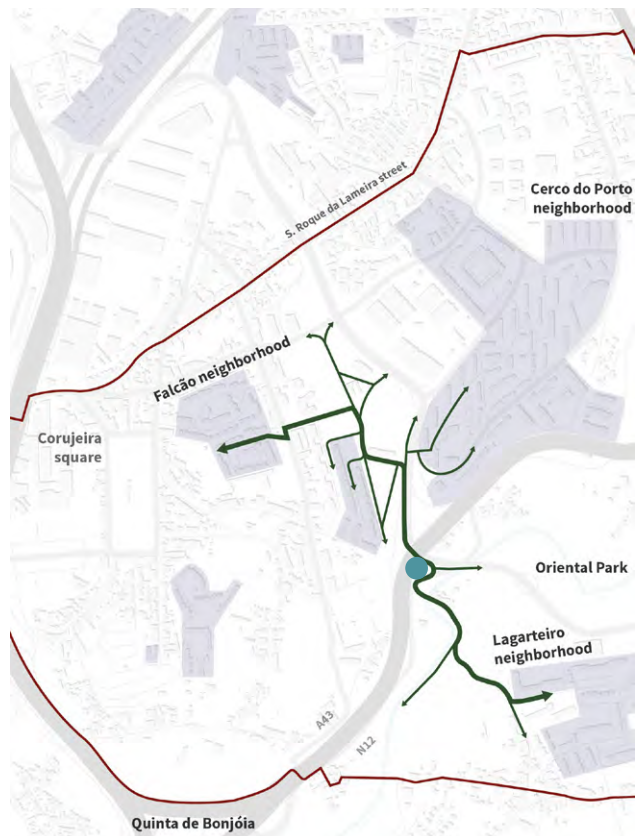
The Pedestrian connection to the Oriental Park was proposed by several participants during the co-design activities:

- Walkthrough with adults (14.12.2019)
- Citizens workshop with adults (15.01.2020)
- Workshop and walkthrough with citizens and municipal technicians (14.07.2020)

State of the art: The proposal is already integrated in the healthy corridor preliminary study.

Best Practices and References

N. A





07. Oliveira urban garden expansion

The entity confirms the need for expansion due to the existence of citizens waiting to obtain agricultural plots.

CHALLENGES

- Expansion is limited by available area (19 plots). Not possible to expand over existing limits given the fact that Campanhã is not one of the parishes with more requests within the scope of *Horta à Porta* project, therefore, it is not a priority area for the expansion of municipal urban gardens;

Participation process to use the NBS

CO-DIAGNOSTIC

The need for Community spaces and Qualified green areas for urban agriculture and gardening, namely with the expansion of Oliveira urban garden was identified in the local diagnostic with several methods and participatory activities.

CO-SELECTION & CO-DESIGN

The Oliveira urban garden expansion was proposed by several participants, namely by the users Alberto Rocha, Adelaide Pina, and Associação Nun' Álvares during co-design activities:

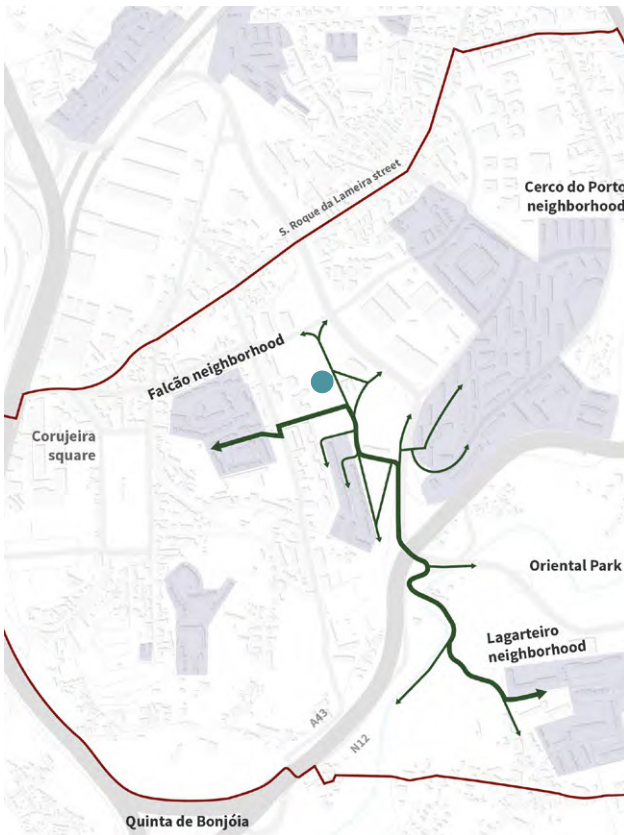
- Walkthrough with adults (14.12.2019)
- Citizens workshop with adults (15.01.2020)
- Face-to-face interview with local facilitator (17.01.2020)
- Workshop and walkthrough with citizens and municipal technicians (14.07.2020)

State of the art: The proposal is already being implemented by Porto municipality

Best Practices and References

Siena urban garden in San Miniato

Several experiences promoted by LIPOR (intermunicipal waste management service of Grande Porto), with the municipalities of Grande Porto.



Description

This proposal presupposes the expansion of the cultivation area to accommodate more plots, also admitting the improvement of the existing conditions, namely in terms of bathrooms, changing rooms and urban furniture (benches and tables).

Positive aspects/challenges

POSITIVE

- Interest of the resident population in the involvement in urban agriculture activities (List of about 20 candidates waiting for the occupation of the plots);
- Possibility of increasing the existing garden up to 19 plots (25m²);
- Possible synergy with other citizens' ideas as well as with existing projects: Campmarket and *Horta à Porta* project – The proposal is framed with the strategy and in agreement with the managing entity of the garden.

08. Public multipurpose outdoor space with shared maintenance (Cerco do Porto)



Description

The proposal aims to requalify the rear space of buildings no. 33 and 34 from Cerco do Porto social housing neighbourhood so that the associations based on the ground floor of those municipal buildings may carry out activities and common events, while increasing protection from the adjacent highway infrastructure. This proposal is primarily intended to use the space (currently without function or use) in an intergenerational, inclusive, and accessible way, once identified the need for staying areas and outdoor space to unroll multipurpose activities promoted by the associations and/or citizens. Proponents revealed interest in a shared maintenance and management of the space, as well as in a covered area and/or temporary physical structure.

Positive aspects/challenges

POSITIVE

- Give function to a space currently unused, therefore contributing to increase the public security of the neighbourhood;
- Promote contact/relationship/shared responsibilities between associations;
- Bordering area of the municipal social housing neighbourhood under requalification (buildings refurbishment in construction stage and public space requalification in design stage);
- Possible synergy with other citizens ideas as well as with existing projects: local fairs, play areas for children, urban farming.

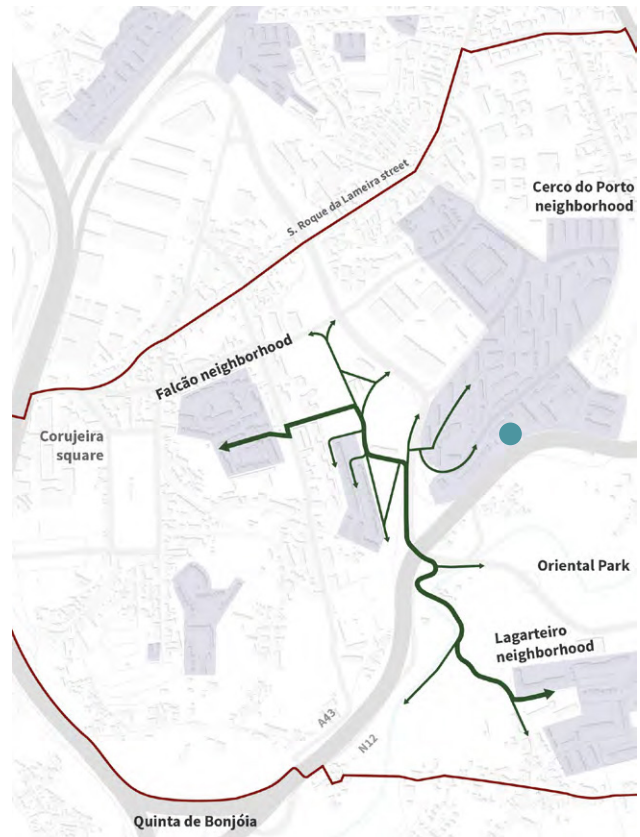
CHALLENGES

- Outside the defined intervention area;
- Isolation of the terrain, not exploiting the potential of a healthy corridor.

Participation process to use the NBS

CO-DIAGNOSTIC

The need for community spaces improvement with opportunities for socialization and entertainment, as play areas for children, was identified in the local diagnostic with several methods and participatory activities.



CO-SELECTION & CO-DESIGN

The public multipurpose outdoor space with shared maintenance (Cerco do Porto) was proposed by three association Asas de Ramalde, Todos, OUPA, APD, in co-design activities:

- Face-to-face meeting with local facilitator (25.01.2020)
- Citizen's video (26.06.2020)
- Workshop and walkthrough with citizens and municipal technicians (14.07.2020)

State of the art: The proposal has already been channelled to DomusSocial, EM to be eventually considered in the Cerco do Porto public space requalification project (design stage).

Best Practices and References

N.A.



09. Cerco do Porto Primary School surroundings improvement



Description

The proposal aims to redesign the surroundings and adjacent areas of Cerco do Porto Primary School. The idea previews, as impact, to increase street dynamic and sense of safeness while upgrading the urban design of the school surroundings.

Positive aspects/challenges

POSITIVE

- Involvement of students and teachers in promoting the spaces surrounding the school;
- Cerco do Porto public space requalification project is under development (design stage);
- Possible synergy with other citizens' ideas: Outdoor spaces for physical activity.

CHALLENGES

- Outside the defined intervention area.

Participation process to use the NBS

CO-DIAGNOSTIC

The need for community spaces improvement and qualified green areas was identified in the local diagnostic with several methods and participatory activities.

CO-SELECTION & CO-DESIGN

The improvement of Cerco do Porto Primary School surroundings was proposed by pupils and teachers and developed with other participants in several activities:

- Walkthrough with children of 4 primary schools (Dec. 2019/Jan.2020)
- Workshop and walkthrough with citizens and municipal technicians (14.07.2020)

State of the art: The proposal has already been channelled to DomusSocial, EM to be eventually considered and integrated in the Cerco do Porto public space requalification project (design stage)

Best Practices and References

N.A.

10. Ring area recovery (Cerco do Porto)

Description

This proposal aims to reformulate the Ring (Cerco do Porto), for recreational purposes, the facility eventually supporting the dynamization of activities in the Healthy Corridor. It was also proposed the inclusion of urban furniture, such as benches, closer to the field.

Positive aspects/challenges

POSITIVE

- Integrates the intervention area of Cerco do Porto public space requalification project (design stage);
- It may contribute to boost programming activities articulated with the Healthy Corridor.

CHALLENGES

- Outside the defined intervention area.

Describe participation process to use the NBS

CO-DIAGNOSTIC

The need for adequate cleanliness and maintenance of the public spaces and play areas was identified in the local diagnostic with several methods and participatory activities.

CO-SELECTION & CO-DESIGN

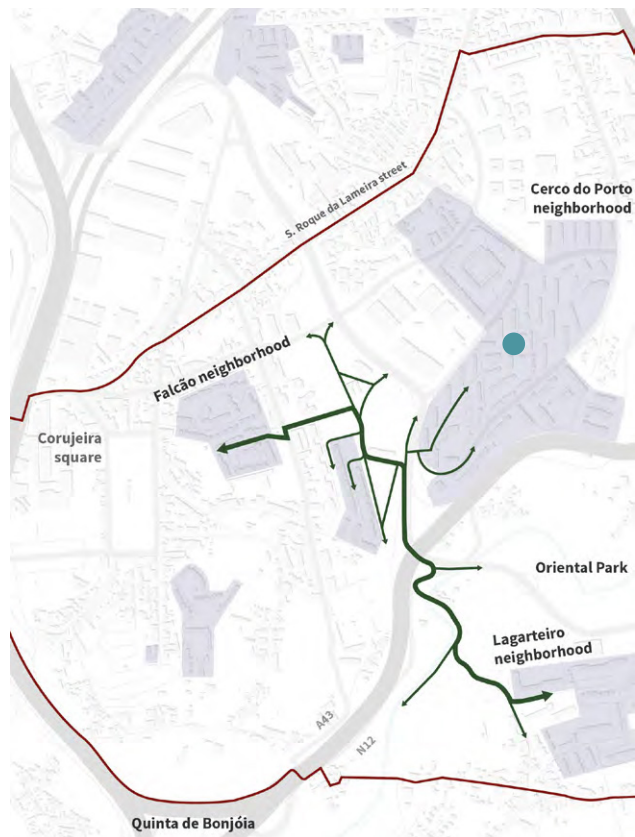
The Ring area recovery (Cerco do Porto) was proposed by pupils and teachers and developed with other participants in co-design several activities:

- Workshop and Walkthrough with children of Cerco do Porto primary school (13.12. 2019)
- Workshop and walkthrough with citizens and municipal technicians (14.07.2020)

State of the art: The proposal has already been channelled to DomusSocial, EM to be eventually considered and integrated in the Cerco do Porto public space requalification project (design stage)

Best Practices and References

N.A





11. Lagarteiro Primary School surroundings safety improvement

Positive aspects/challenges

POSITIVE

- Possible synergy with other citizens' ideas and existing programs: renovation of the Lagarteiro path and the Lagarteiro Street section;
- Provide better security conditions for the school community.

CHALLENGES

- Outside the defined intervention area;
- Requires a holistic intervention from a social perspective.

Participation process to use the NBS

CO-DIAGNOSTIC

The need for community spaces improvement and qualified green areas was identified in the local diagnostic with several methods and participatory activities.

CO-SELECTION & CO-DESIGN

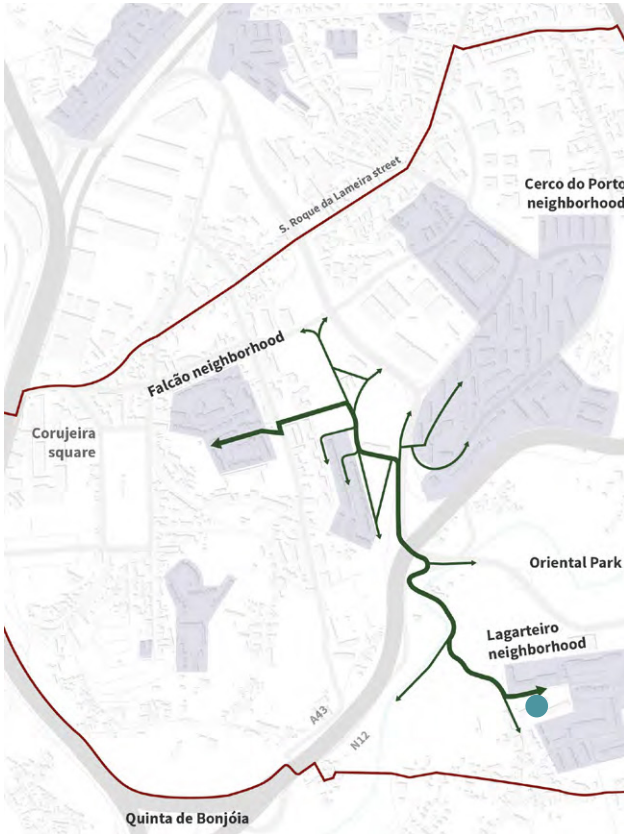
The improvement of Lagarteiro Primary School surroundings safety was proposed by a group of citizens, namely André Sousa, association Norte Vida and then developed in several participatory activities:

- Citizen workshop with adults (15.01.2020)
- Face-to-face meeting with local facilitator (21.01.2020)
- Workshop and walkthrough with citizens and municipal technicians (14.07.2020)

State of the art: The proposal was channelled to another municipality project.

Best Practices and References

N.A.



Description

This proposal refers to the surroundings of Lagarteiro Primary School, which lack in terms of dynamism and security. The school has serious social problems, enhanced by its surroundings and morphology. The intervention could “open the school” to the community in order to convey a sense of collective involvement. The objective is to /use the space for socialization between school and the surrounding community, making the area more dynamic and creating more security and circulation conditions. In short, this intervention aims to improve the relationship between the school and the community (reducing school dropout and achieving social cohesion).

12. Renovation of the Viewpoint next to the Cemetery

Description

The proposal aims to renovate the viewpoint taking into consideration the location of the secondary entrance to the cemetery that is widely used by citizens and has interesting views over the Oriental Park and Campanhã rural landscape.

Positive aspects/challenges

POSITIVE

- Possible synergy with other citizens' ideas: outdoor space for leisure and sports;
- Promotion of better conditions of permanence, crossing and safety.

CHALLENGES

- Need for regular cleaning and maintenance;
- Outside the defined intervention area.

Participation process to use the NBS

CO-DIAGNOSTIC

The need for better conditions of pedestrian paths, community spaces and qualified green areas was identified in the local diagnostic with several methods and participatory activities.

CO-SELECTION & CO-DESIGN

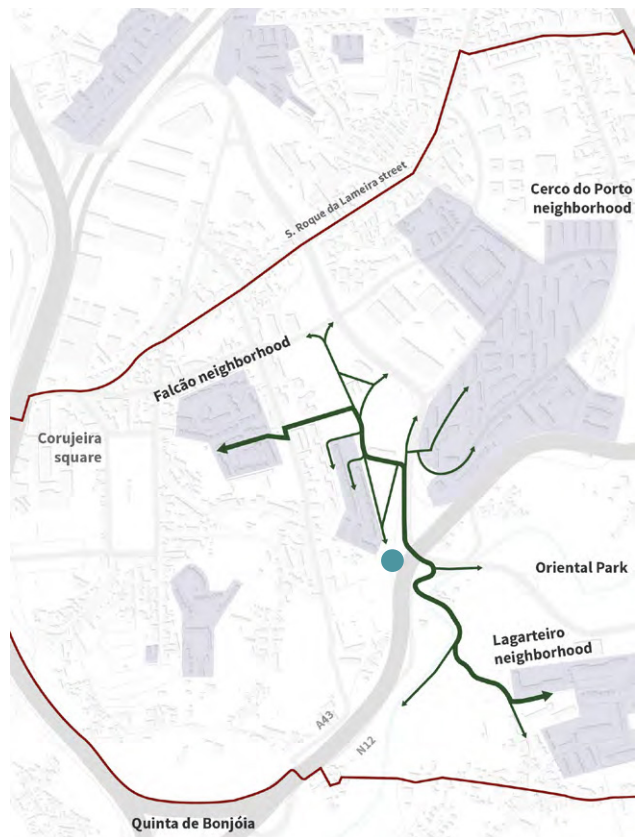
The Renovation of the Viewpoint next to the Cemetery surroundings safety was proposed by a group of citizens in several co-design activities:

- Citizen workshop with adults (15.01.2020)
- Workshop and walkthrough with citizens and municipal technicians (14.07.2020)

State of the art: The proposal was channelled to other municipality departments

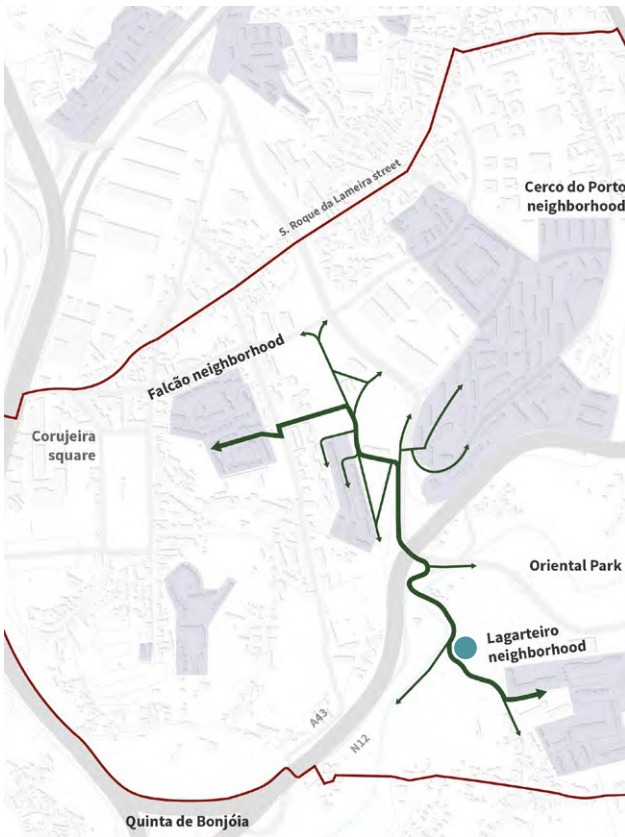
Best Practices and References

N.A.





13. Lagarteiro neighbourhood path requalification



Description

The proposal foresees to improve the accessibility to Lagarteiro neighbourhood and its connection with the Oriental Park through the requalification of the old path, deeply connected with the ancient rural landscape of Campanhã. The intervention would be a contribution to an effective improvement in terms of public security and sense of safety, currently compromised by the path conditions and lack of visibility.

Positive aspects/challenges

POSITIVE

- Opportunity to regenerate historic pathways as nature-based solution, preserving existing vegetation with ecological value, traditional walls and pavements

CHALLENGE

- The complexity of the proposal is limited by the overall project budget;
- Requires an holistic intervention from a social perspective;
- The path is surrounded by private lands that also need cooperate in terms of vegetation control/maintenance, to ensure the success of the intervention

Participation process to develop the NBS

CO-DIAGNOSTIC

The need for better conditions of pedestrian paths and the respect of existing memory was identified during the local diagnostic activities and methods.

CO-SELECTION & CO-DESIGN

The requalification of the Lagarteiro path was proposed by a group of citizens, namely Laurinda and Paulo Lima from Lagartixa Park association, and then developed in several participatory activities:

- Citizen workshop with adults (15.01.2020)
- Face-to- face interview with local facilitator
- Citizen's video (26.06.2020)
- Workshop and walkthrough with citizens and municipal technicians (14.07.2020)

State of the art: The proposal was channelled to other municipality projects due to its complexity. Meanwhile, Lagarteiro path and surrounding areas were included in the cleaning and maintenance agenda of the municipal teams and the impact on local safety and connections was already felt in the community.

Best Practices and References

Salemi Recupero strade e aree adiacenti a Piazza Alicia – link

Rua Direita in Porto, municipal programme

14. Lagarteiro street section requalification

Description

This proposal aims to requalify a section of Lagarteiro street. It was identified the need to improve mobility and connection between *Parque Oriental* and Lagarteiro Neighbourhood.

Positive aspects/challenges

POSITIVE

- Dynamize Lagarteiro Street;
- Possible synergy with other citizens' ideas: Lagarteiro path requalification.

CHALLENGES

- Outside the defined intervention area;
- Requires a concerted approach with Social Action Entities in order to carry out an intervention capable of solving the identified challenges, in a systematic and effective approach (with a sustainable resolution over time), it would be necessary to make a much higher investment than the available in URBINAT Project.

Participation process to use the NBS

CO-DIAGNOSTIC

The need for better conditions of pedestrian paths and the respect of existing memory was identified during the local diagnostic activities and methods.

CO-SELECTION & CO-DESIGN

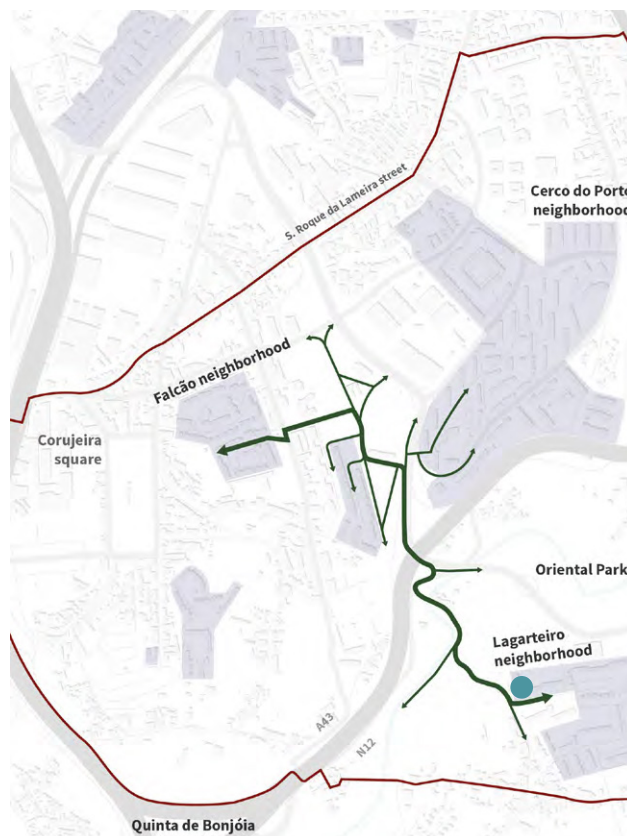
The renovation of a section of the Lagarteiro street was proposed by a group of citizens, namely by André Sousa, association Norte Vida, and then developed in several participatory activities:

- Citizen workshop with adults (15.01.2020)
- Face-to-face interview with local facilitator
- Workshop and walkthrough with citizens and municipal technicians (14.07.2020)

State of the art: The proposal has already been channelled to specific municipal departments.

Best Practices and References

N.A.





15. Access to Pego Negro and Oriental City Park improvement

Positive aspects/challenges

POSITIVE

- Formalize and qualify daily routes used by pedestrians that currently do not meet the conditions of safety or comfort;
- Ensure lighting and maintenance of the path and surrounding areas.

CHALLENGES

- Outside the defined intervention area;
- Some of the land/terrain used for the path is private.

Participation process to use the NBS

CO-DIAGNOSTIC

The need for more accessible paths for all citizens and better conditions of pedestrian paths and new connections were identified during several methods and participatory activities.

CO-SELECTION & CO-DESIGN

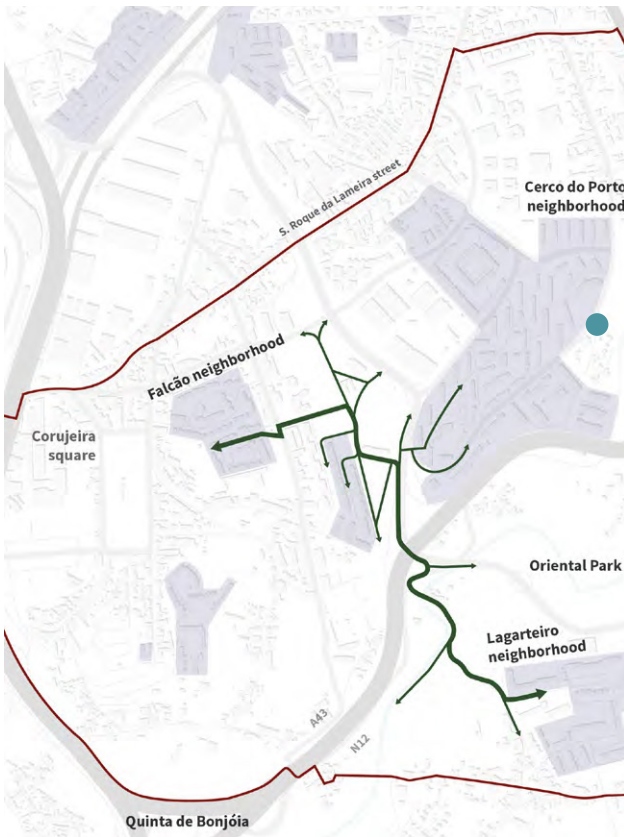
The Access to Pego Negro and Oriental City Park improvement was proposed by pupils and teachers, and developed with other participants in co-design several activities:

- Workshop and Walkthrough with children of Cercos do Porto primary school (03 and 13.12. 2019)
- Workshop and walkthrough with citizens and municipal technicians (14.07.2020)

State of the art: The proposal has already been channelled to specific municipal departments.

Best Practices and References

N.A.



Description

The proposal aims to requalify pedestrian paths that connect Cercos do Porto to Pego Negro and Oriental Park. Due to existing topographic and built infrastructures (large roads), the pedestrian connections are compromised and dangerous. The idea previews, as impact, to increase the existent street dynamic and the sense of safeness.

16. Playground in Corujeira Square (Praça da Corujeira)

Description

The proposal aims for the inclusion of a playground in Corujeira Square. However, the need for more playing areas is transversal to other public spaces in Campanhã.

Positive aspects/challenges

POSITIVE

- This idea is already being developed by the municipality as the ongoing project for the requalification of *Praça da Corujeira* (ongoing) does include, in its programme, children's equipment.

CHALLENGES

- Outside the defined intervention area;
- Attending the level of development of the municipal initiative, it will be difficult to integrate the contributions from the school community.

Participation process to use the NBS

CO-DIAGNOSTIC

The need for green areas and their connection for leisure and sports activities and play areas for children were identified during several methods and participatory activities.

CO-SELECTION & CO-DESIGN

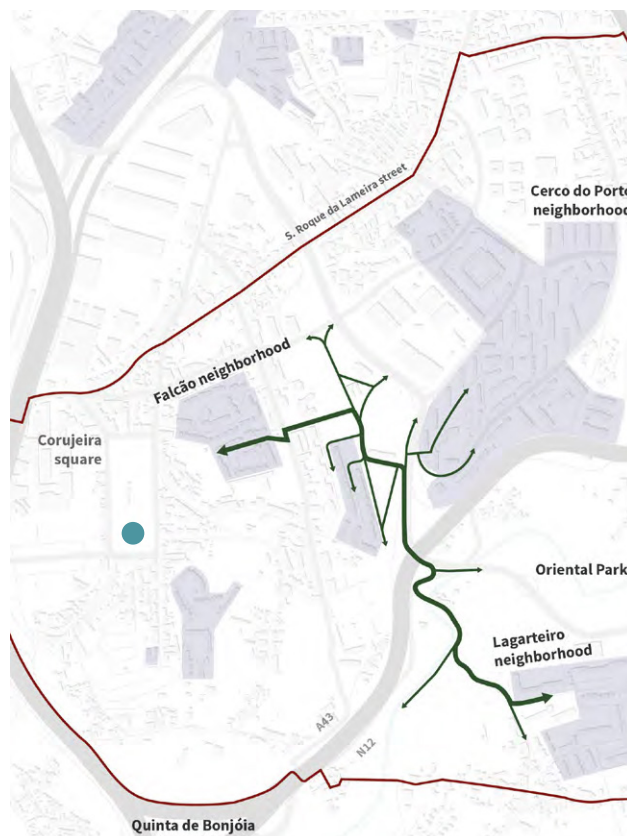
The Access to Pego Negro and Oriental City Park improvement was proposed by pupils and teachers and developed with other participants in co-design several activities:

- Workshop and Walkthrough with children of Cerco do Porto primary school (13.12. 2019)
- Walkthrough with adults (14.12.2019)
- Citizens workshop with adults (15.01.2020)
- Workshop and walkthrough with citizens and municipal technicians (14.07.2020)

State of the art: The proposal has already been channelled to specific municipal departments.

Best Practices and References

N.A.





17. Lagarteiro sports hall access improvement (informal paths)

Positive aspects/challenges

POSITIVE

- Possibility to promote and improve shorter routes between the municipal pavilion and the Lagarteiro neighbourhood;
- Formalize and qualify useful paths daily used as shortcuts through the area.

CHALLENGES

- Outside the defined intervention area;
- The referred paths used as shortcuts through the area do cross private property.

Participation process to use the NBS

CO-DIAGNOSTIC

The need for better conditions of pedestrian paths and qualified green areas was identified in the local diagnostic with several methods and participatory activities.

CO-SELECTION & CO-DESIGN

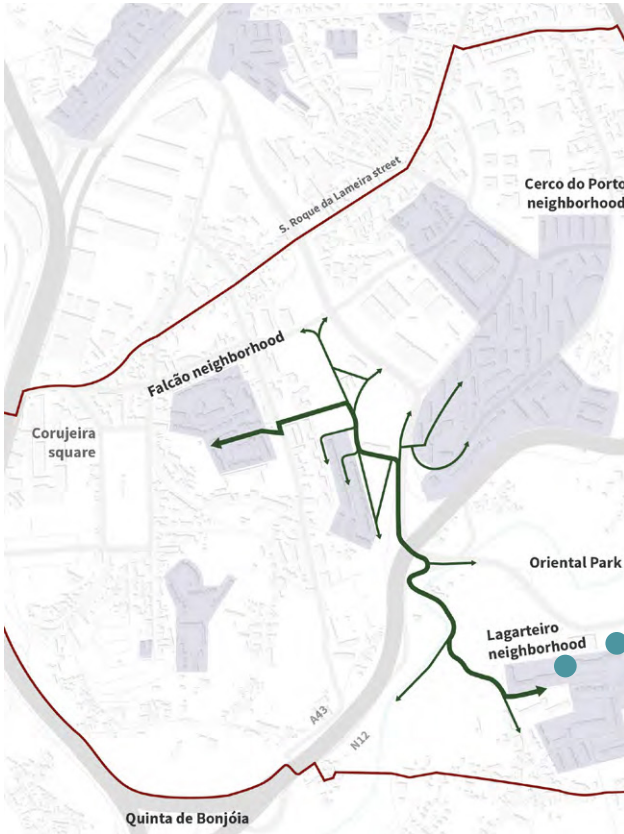
The improvement of Lagarteiro sports hall access (informal paths) was proposed by a group of citizens, namely by André Sousa, association Norte Vida, and then developed in several participatory activities:

- Face-to-face meeting with local facilitator (21.01.2020)
- Workshop and walkthrough with citizens and municipal technicians (14.07.2020)

State of the art: The proposal will be channelled to other municipal projects.

Best Practices and References

N.A.



Description

The proposal is associated with easing the access to the main entrance of the Lagarteiro sports hall, as citizens coming from the Lagarteiro neighbourhood use an informal, uncomfortable and dangerous path as an alternative shortcut. The reform of the path would then improve the connection/access system between the pavilion and the neighbourhood.

18. Lagarteiro sports hall access improvement (entrance door)

Description

The proposal is associated with the difficulties of accessing the Lagarteiro sports hall. This difficulty of access comes from the fact that the main entrance of the pavilion is located next to a lane (Alameda de Cartes), making the youth and children living in Lagarteiro housing go around the pavilion to enter it. In this sense, a new entrance in the back or lateral side of the pavilion would facilitate the citizens/users coming from the Lagarteiro neighbourhood.

Positive aspects/challenges

POSITIVE

- The new entrance would promote and improve shorter routes to the citizens living in Lagarteiro municipal social housing.

CHALLENGES

- Outside the defined intervention area;
- The new entrance would imply the interior space reorganisation and the reformulation of the security and control system of the building.

Participation process to use the NBS

CO-DIAGNOSTIC

The need for better conditions of pedestrian paths, community spaces and qualified green areas was identified in the local diagnostic with several methods and participatory activities.

CO-SELECTION & CO-DESIGN

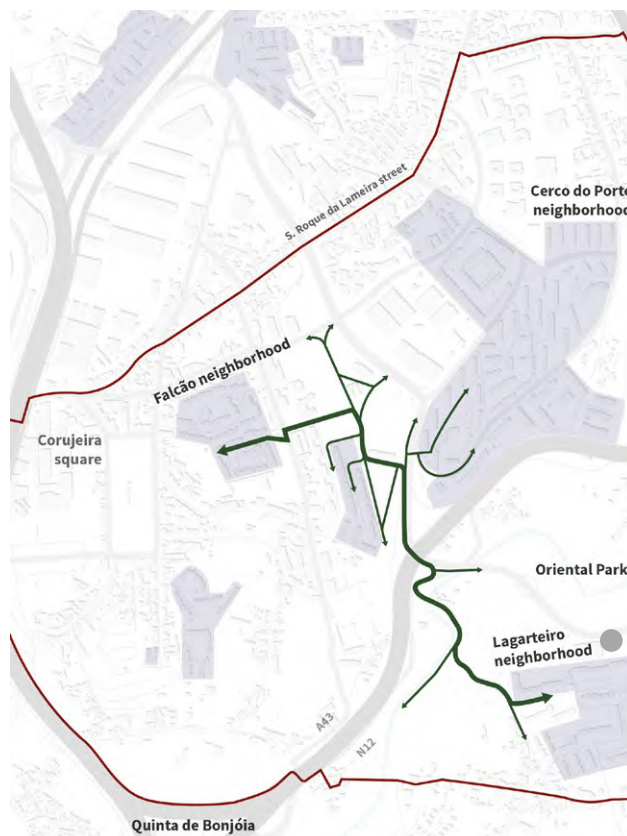
The improvement of Lagarteiro sports hall access (informal paths) was proposed by a group of citizens, namely by André Sousa, association Norte Vida, and then developed in several participatory activities:

- Face-to-face meeting with local facilitator (21.01.2020)
- Workshop and walkthrough with citizens and municipal technicians (14.07.2020)

State of the art: The proposal will not be developed i

Best Practices and References

N.A.



19. Campmarket

Description

The proposed idea aims to organize and establish the *campmarket*, a solidarity market with local producers and craftsmen, thus also helping to reduce unemployment and to support cultural activities, and promoting a circular economy.

The market could be organised in two spaces: one more related with fresh products (vegetables, fruits) and other with material (books, crafts, clothes). These spaces could be complemented with a market for children. The market can also organise cultural activities during the day.

Positive aspects/challenges

POSITIVE ASPECTS

- Promote and contribute to local economies;
- Local citizens involvement;
- The market can be organized and established by local associations, in particular by APPC (*Associação do Porto de Paralisia Cerebral*) and *Fios de Desafios*, through REDES project;
- The market shall be integrated on already existing activities, so it demands an effort to verify already existing markets and fairs and local authorities licensing;
- The synergies with cultural associations will promote the sense of community.

CHALLENGES

- Organise a complex event on a regular basis.

Participation process to use the NBS

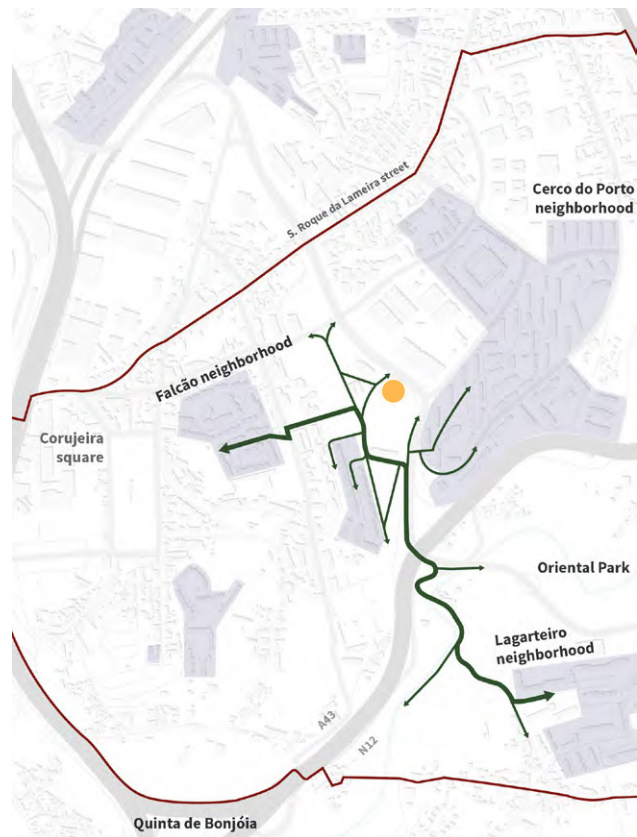
CO-DIAGNOSTIC

The need to improve the local economy and to create community and cultural opportunities was identified in the local diagnostic with several methods and participatory activities.

CO-SELECTION & CO-DESIGN

The initiative Campmarket was proposed by a group of citizens, namely by Isabel Rute Costa from association APPC, and then developed in several co-design activities:

- Citizen workshop with adults (15.01.2020)
- Face-to-face meeting with local facilitator (26.01.2020)
- Citizen's video (26.06.2020)
- Workshop and walkthrough with citizens and municipal technicians (14.07.2020)
- Online co-design workshop (7.11.2020)



State of the art: The proposal will be developed, namely in the public event “Experimento”.

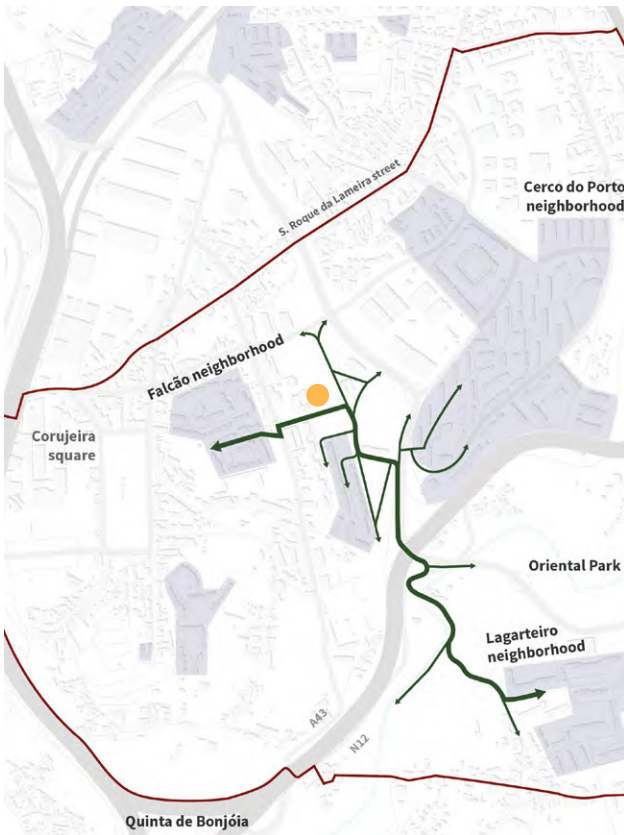
Best Practices and References

Local fairs: *Feira da Vandoma* and *Feira de Produtos Biológicos do Parque da Cidade*.



20. Community mobile kitchen

municipal projects may enhance this initiative and eventually aggregate with others; integration in the Campanh'up platform (involvement of the cultural platform on this activity and other similar ones).



Description

Proposal of a community kitchen that can be mobile or installed on a specific location, aiming to be an opportunity to share traditional recipes and to promote healthy food with the products from the urban garden. 'Community lunch' can be organised on a regular basis to promote the sense of belonging. There is the possibility of articulating with other programmatic and territorial proposals, therefore contributing to dynamizing the space and the community.

Positive aspects/challenges

POSITIVE

- Potential use of products produced in the urban garden;
- Potential partnerships with public-private entities and social solidarity institutions for the provision of mobile kitchens;
- Possible synergy with other citizens ideas as well as with existing projects: articulation with

CHALLENGES

- Logistical needs: equipment, sanitary infrastructure and water supply;
- Need for licensing / authorization for implementation;
- The municipal experience alerts for the risk of vandalism;
- Articulation between the entities involved (URBiNAT partners, local partners and promoters of the initiative) for further development of a temporary demountable community kitchen (operationalization plan, management model, organization, partnerships, needs), so it can be tested firstly, to be eventually evolved to a regular initiative (periodic).

Participation process to use the NBS

CO-DIAGNOSTIC

The need to improve local economy, to encourage healthy and traditional food/products and to create community and cultural opportunities was identified in the local diagnostic with several methods and participatory activities.

CO-SELECTION & CO-DESIGN

The Initiative Community mobile kitchen was proposed by a group of citizens, namely by Adelaide Pina (municipal tenant, Falcão housing) and Nuno Moutinho (Association *Terra Solta*), and then developed in several co-design activities:

- Citizen workshop with adults (15.01.2020)
- Face-to-face meeting with local facilitator (21.02.2020)
- Workshop and walkthrough with citizens and municipal technicians (14.07.2020)

State of the art: The proposal can be developed, namely in the public event "Experimento".

Best Practices and References

The Association *Terra Solta* organizes a weekly community lunch in the urban garden.

21. Community-based management of urban garden-Germinário

Description

The proposal intends to implement a community-based management of urban gardens.

The development of this proposal evolves from the idea related to the expansion of the Oliveira Urban Garden's NBS.

Positive aspects/challenges

POSITIVE

- Opportunity to create a pilot case to test a circular economy model for social purposes and interests;
- Sharing knowledge of agricultural practices and resources among users who currently explore the Urban Garden;
- Possible synergy with other citizens' ideas: Community kitchen;
- Learn from LIPOR experience with other municipalities.

CHALLENGES

- The community management needs to be adapted to the local management practices;
- Lack of definition of the concept of "community";
- Identify the association/citizens available to develop this proposal
- The municipal experience alerts that urban gardens up to 20/30 plots, and with reduced common space, are easier to manage.

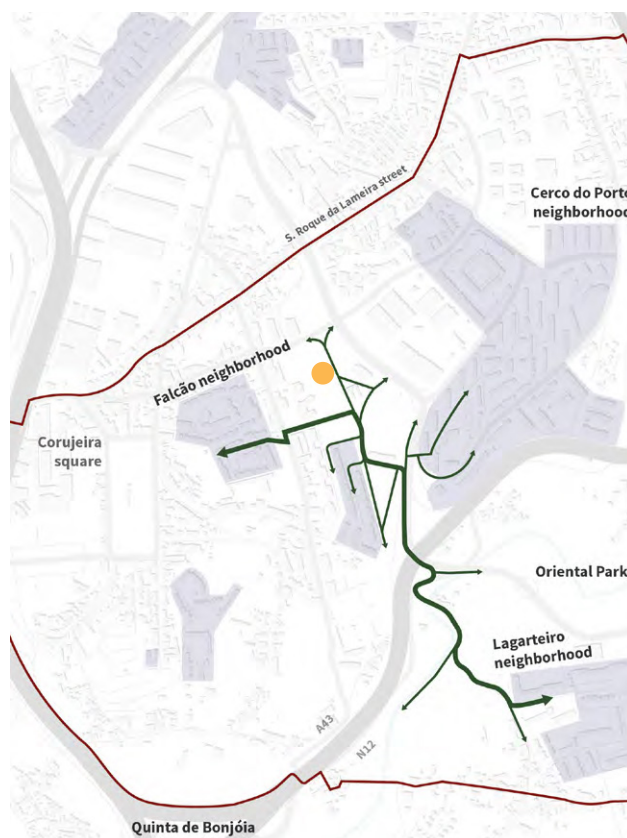
Participation process to use the NBS

CO-DIAGNOSTIC

The need to improve the local economy, to encourage healthy and traditional food/products and to create community and cultural opportunities was identified in the local diagnostic with several methods and participatory activities.

CO-SELECTION & CO-DESIGN

The Initiative Community-based management of urban garden was proposed by a group of citizens, namely by Nuno Moutinho (*Associação Soalheira*) and Vítor Parati (*Associação Terra Solta*), Alberto Rocha and Adelaide Pina, and then developed in several co-design activities:



- Citizen workshop with adults (15.01.2020)
- Face-to-face meeting with local facilitator (26.01.2020)
- Workshop and walkthrough with citizens and municipal technicians (14.07.2020)

State of the art: The proposal can be developed, namely in the public event "Experimento".

Best Practices and References

LIPOR (intermunicipal waste management service of *Grande Porto*) – Urban Gardens Project Sienna Urban gardens



22. Support structure to Oriental City Park

Positive aspects/challenges

POSITIVE

- Enhance public-private partnership (Lagartixa Park association owns a lot near Rio Tinto Walkway);
- Proximity to *Bairro do Lagarteiro* (isolated from the surroundings);
- Possible synergy with other citizens' ideas: Community garden management model; eco-construction and urban agriculture activities;
- Could be Included in the Municipal Fund to support popular associations in the Municipality of Porto.

CHALLENGES

- Outside the defined intervention area;
- Private property (conditioning direct investment within the scope of the project).

Participation process to use the NBS

CO-DIAGNOSTIC

The need to improve the local economy, to encourage healthy and traditional food/products and to create community and cultural opportunities was identified in the local diagnostic with several methods and participatory activities.

CO-SELECTION & CO-DESIGN

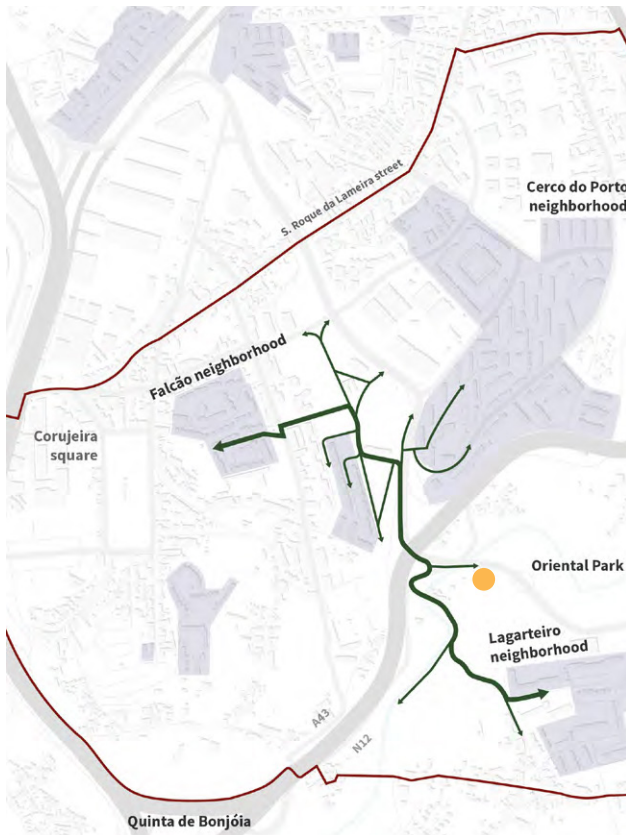
The Support structure to Oriental City Park was proposed by a group of citizens, namely by Laurinda and Paulo Lima, from Lagartixa Park association, and then developed in several co-design activities:

- Citizen workshop with adults (15.01.2020)
- Face-to-face meeting with local facilitator (26.01.2020)
- Citizen's video (26.06.2020)
- Workshop and walkthrough with citizens and municipal technicians (14.07.2020)

State of the art: The proposal can be developed, namely in the public event "Experimento".

Best Practices and References

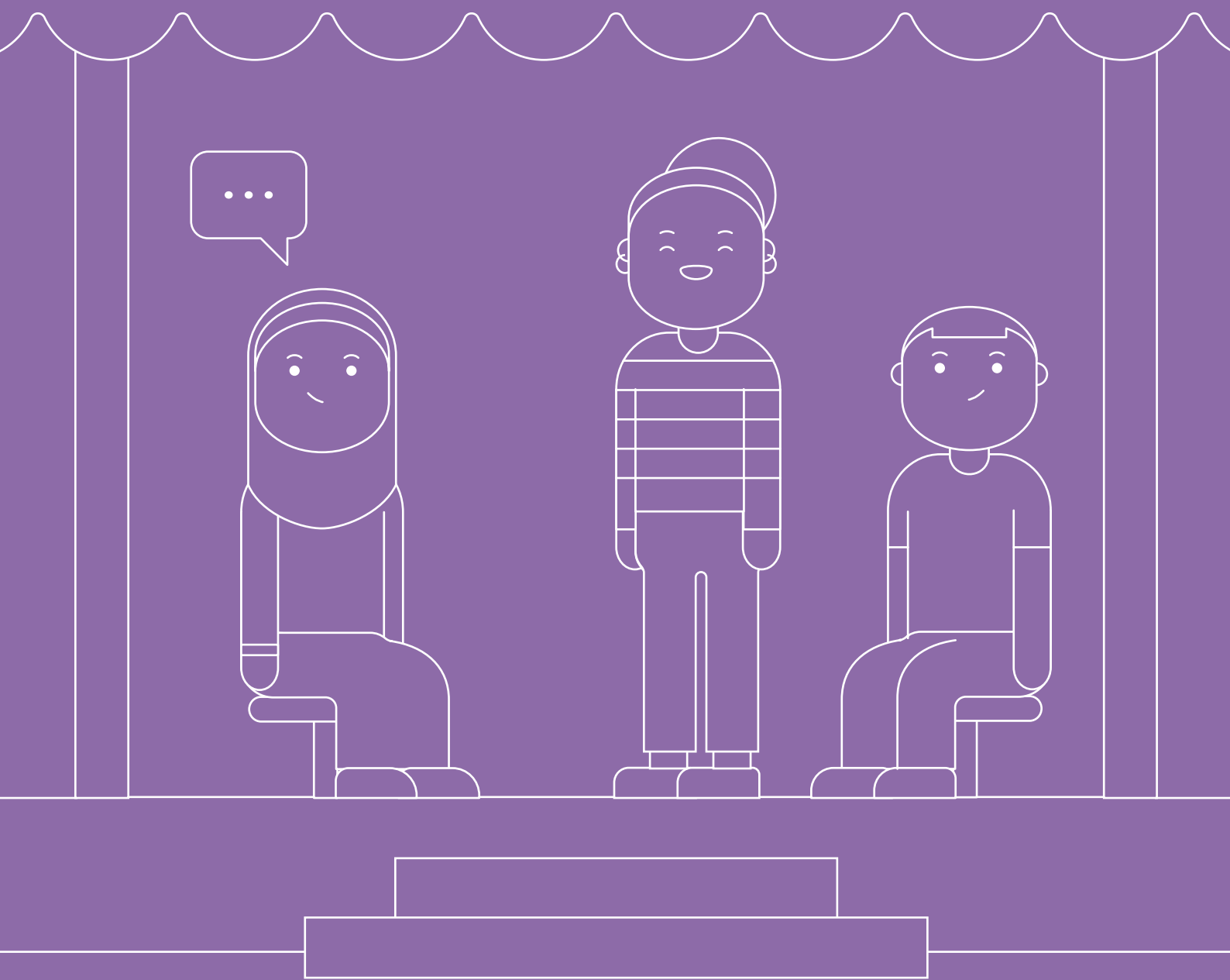
N.A.

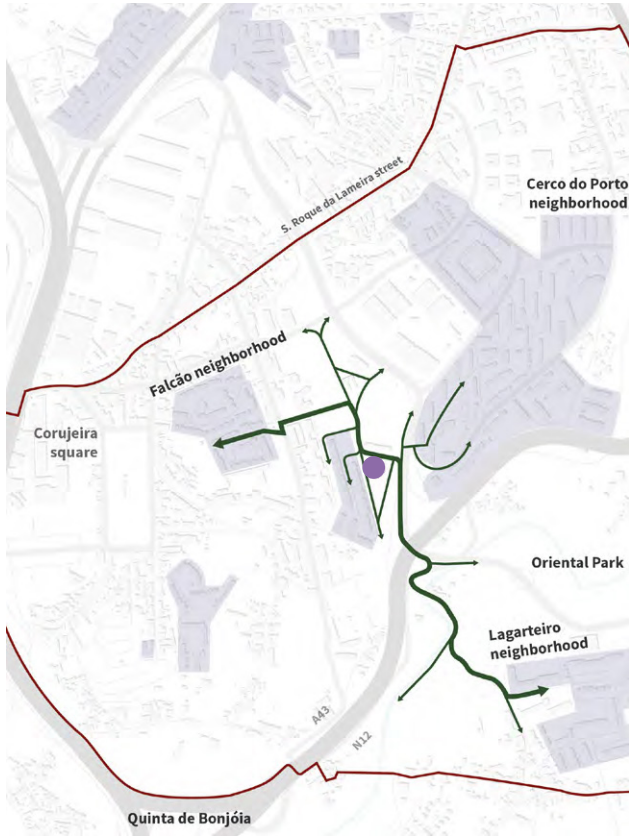


Description

The proposal foresees the creation of a support structure for the Oriental Park, where it could be possible to include different activities: Bread ovens, urban gardens; rest areas near the Oriental Park, among others. This proposal, in addition to enhancing the *Rua do Lagarteiro* (Lagarteiro pathway) and the *Passadiço de Rio Tinto* (Rio Tinto Walkway), also has the potential to host and connect with other initiatives and activities by local associations and such as: *Associação Soalheira* and *Visões Úteis*.

Culture and Sports





Description

Proposal to create a programme that favours the development of physical and recreational activities, such as board yoga, meditation, traditional games. These activities will use the green space that will be developed under NBS 1. Outdoor Programme for sports and leisure activities

Positive aspects/challenges

POSITIVE

- Promotion of sports and leisure activities and a more physically active population in the study area;
- Contribution to increase the appropriation of the public space;
- Consistent with ongoing local programs or initiatives organized by the Municipality of Porto, namely the municipal company *Agora – Cultura e Desporto do Porto, EM*, with the possibility to create synergies namely

23. Outdoor Programme for sports and leisure activities

with: *Dias com Energia* (“Days with energy”) (Ágora/CMP) that promote Tai Chi, Yoga, Pilates classes in various parks in the city; *Domingos em Forma* (“Sundays in form”), one of the AIIA program (DMCS/CMP); and, more recently, the programme *Desporto no bairro* (“Sport in the neighbourhood”).

CHALLENGES

Engage local community in outdoor sports and leisure activities, as users and also as organisers.

Participation process to develop the NBS

CO-DIAGNOSTIC

The need for the improvement of community spaces, play areas for children and green areas and its connection to leisure and sports activities was identified through several methods and activities developed during the local diagnostic.

CO-SELECTION & CO-DESIGN

The proposal of “outdoor programme for physical exercise” was proposed by Alberto, a yoga teacher resident in the study area and co-designed during several participatory activities:

- Citizen workshop with adults (15.01.2020)
- Face-to-face interview with local facilitator (15.01.2020)
- Citizen's video (26.06.2020)
- Workshop with citizens and municipal technicians (14.07.2020)
- Online workshop to co-design four NBS (07.11.2020)

State of the art: The proposal is being developed in articulation with Ágora – Cultura e Desporto do Porto, E.M. and several associations, namely OUPA and APPC, in synergy with the REDES project.

Best Practices and References

N. A.

24. Cultural platform – Campanh'UP

Description

The proposal aims to create a cultural platform that allows the dissemination, creation of information, training and entertainment through various initiatives and mechanisms (e.g., website, workshops, radio station). The objective will be to streamline the process of creating a platform for disseminating information co-dynamized with the community, with content that is of collective interest, through diversified channels and actions: joint dynamization actions; experiments with different activities; workshops/training; content production; website development, social networks; other diversified products and channels of communication and interaction.

Positive aspects/challenges

POSITIVE

- Platform useful for the development of participation activities within URBiNAT project and other projects, promoting greater involvement of the citizens of Campanhã;
- Ongoing development to support URBiNAT activities;
- High potential for synergy with all immaterial proposals (that consequently have in their essence cultural, artistic, recreational and sports activities);
- Synergies with other municipal projects. Possibility to contribute to a cultural agenda for Campanhã.

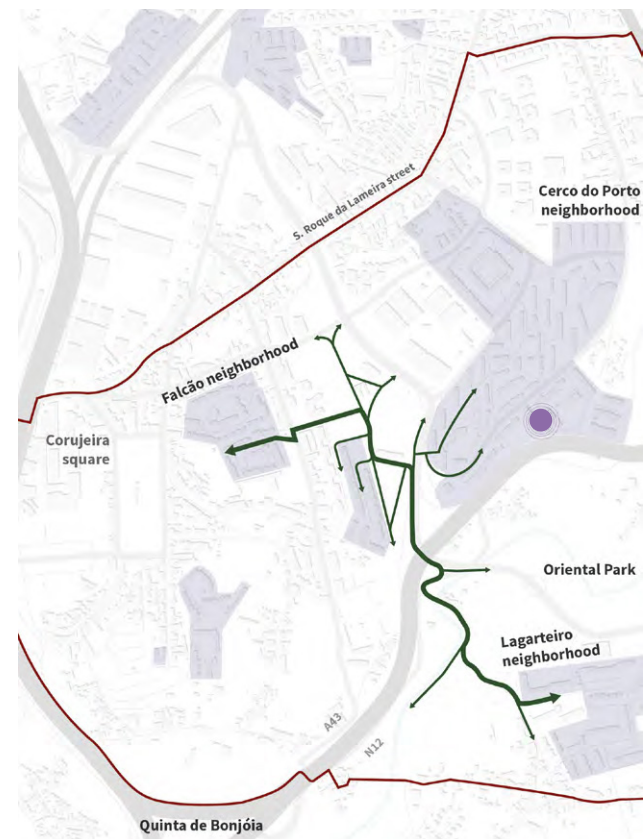
CHALLENGES

- Need for external support to ensure its sustainability after URBiNAT;
- Subject to the budget for participation activities.

Participation process to use the NBS

CO-DIAGNOSTIC

The need to improve community spaces to create cultural opportunities and participatory activities was identified in the local diagnostic with several methods and participatory activities.



CO-SELECTION & CO-DESIGN

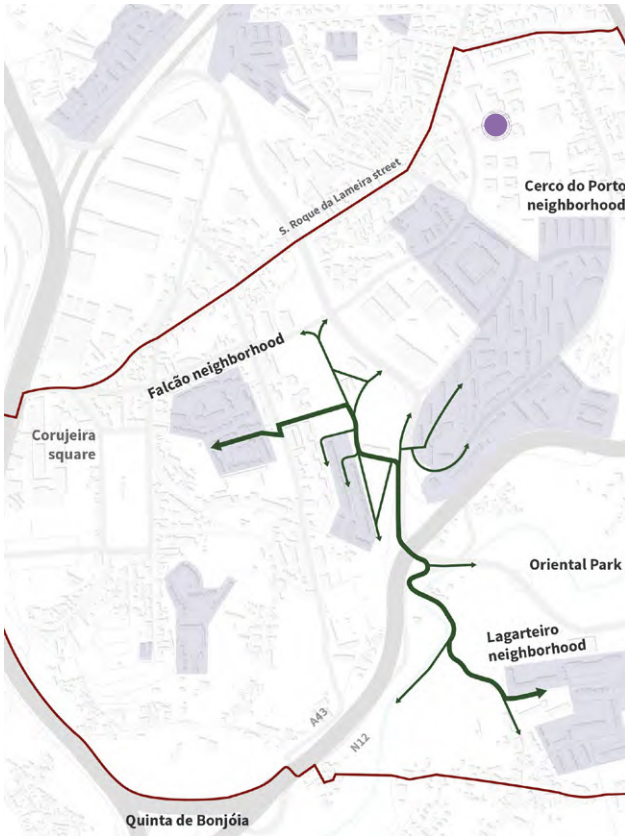
The Campanh'UP cultural platform was proposed by a group of citizens, namely by Ricardinho Lopes, association OUPA, and then developed in several co-design activities:

- Citizen workshop with adults (15.01.2020)
- Face-to-face meeting with local facilitator (22/01/2020)
- Citizen's video (26.06.2020)
- Workshop and walkthrough with citizens and municipal technicians (14/07/2020)

State of the art: The proposal is being developed in articulation with Ágora – Cultura e Desporto do Porto, E.M. and several associations, namely OUPA and APPC, in synergy with the REDES project.

Best Practices and References

Cultura em Expansão programme, Municipality of Porto



Description

This proposal aims to boost the Healthy Corridor as a whole by carrying out artistic projects that propose a reflection with citizens on the heritage values of Campanhã. The project “O LUGAR DO OLHAR” (The place of the gaze) will develop a Large-scale cyanotype with photographs and images collected by the participants to perform an artistic intervention. This proposal can integrate other artistic activities/interventions, such as a) Recreate and install a reduced version of *Praça da Corujeira* (or other square in this parish) next to Campanhã Station; b) Explore the memory of the existence of a playground in *Praça da Corujeira*; c) Elephant in the room; d) Railway; e) Shifting lines; f) Between walls

25. Artistic projects – “O Lugar do Olhar”

Positive aspects/challenges

POSITIVE

- Programmatic proposals that may happen within the study area;
- Potential to involve local schools' communities and programs;
- Possible synergy with other citizens' ideas: Campanh'UP – Cultural Platform.

CHALLENGES

- Availability of the proponents;
- Subject to the budget for participation activities.

Participation process to use the NBS

CO-DIAGNOSTIC

The need to improve community spaces to create cultural opportunities and participatory activities was identified in the local diagnostic with several methods and participatory activities.

CO-SELECTION & CO-DESIGN

Artistic projects – “O Lugar do Olhar” and others – was proposed by a group of citizens, namely by Joaquim Jesus and André Silva, and then developed in several co-design activities:

- Citizen workshop with adults (15.01.2020)
- Face-to-face meeting with local facilitator (29.01.2020)
- Workshop and walkthrough with citizens and municipal technicians (14.07.2020)

State of the art: The proposal can be developed, namely in the public event “Experimento”.

Best Practices and References

Cultura em Expansão programme, Municipality of Porto

Temporary Peatonal zones, Municipality of Porto

26. Initiative – Memories of Campanhã

Description

The purpose underlying this proposal is to gather up stories and images from personal and municipal archives. Through participatory activities inhabitants of Campanhã could be invited to share their memories contributing to improve the sense of Campanhã belonging. The activities will focus on citizens with advanced age but can be extended to other groups.

Positive aspects/challenges

POSITIVE

- Possible synergy with other citizens' ideas and other municipal programs: *Campanhã é a minha casa* ("Campanhã is my home") from *Cultura em Expansão* programme, and sensorial map of Campanhã; Campanh'up platform;
- Promote Campanhã intangible heritage;

CHALLENGES

- Availability of the proponents;
- Subject to the budget for participation activities.

Participation process to use the NBS

CO-DIAGNOSTIC

The need to create cultural opportunities and participatory activities that respect/activate existing memory was identified in the local diagnostic with several methods and participatory activities.

CO-SELECTION & CO-DESIGN

The Initiative Memories of Campanhã was proposed by a group of citizens, namely by Gisela Carvalho, association Soutelo and then developed in several co-design activities:

- Citizen workshop with adults (15.01.2020)
- Face-to-face meeting with local facilitator (06.03.2020)
- Workshop and walkthrough with citizens and municipal technicians (14.07.2020)

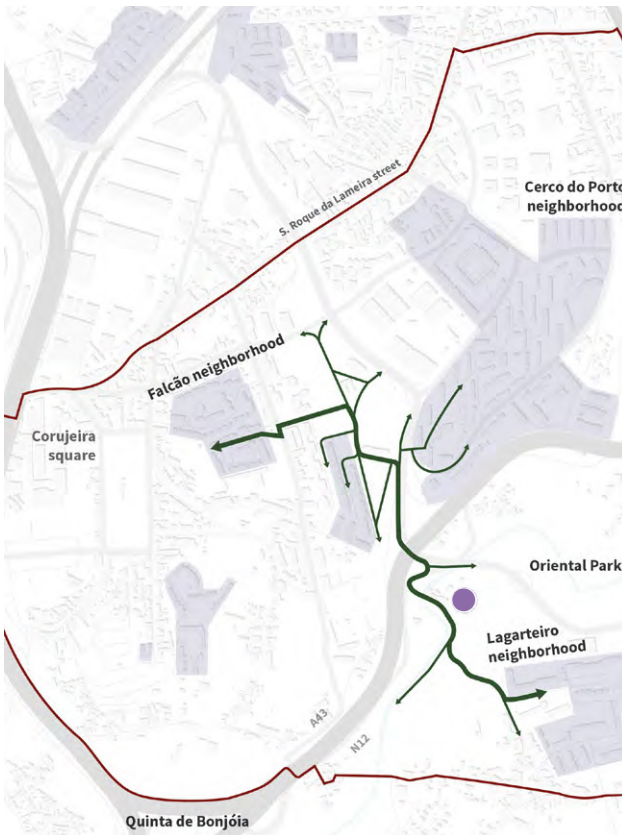


State of the art: The proposal can be developed, namely in the public event "Experimento".

Best Practices and References

Campanhã é a minha casa ("Campanhã is my home") from *Cultura em Expansão* programme, Municipality of Porto

"Miraflor emotional map 2.0", Miraforum



Description

The proposal aims to create a Cultural and Heritage Route in Campanhã. It could include visits/routes focusing on agricultural/rural heritage of Campanhã (*Rio Tinto*, *Pêgo Negro*, among other places).

27. Local heritage Route

Positive aspects/challenges

POSITIVE

- Promotion of built, natural and cultural heritage in Campanhã;
- The initiative needs a low budget.
- Possible synergy with other citizens' ideas: Campanh'UP – Cultural Platform; Memories of Campanhã.

CHALLENGES

- Availability of the proponents.

Participation process to use the NBS

CO-DIAGNOSTIC

The need to create cultural opportunities and participatory activities that respect/activate existing memory was identified in the local diagnostic with several methods and participatory activities.

CO-SELECTION & CO-DESIGN

The Initiative Memories of Campanhã was proposed by a group of citizens, namely by Laurinda e Paulo Lima, from association Lagartixa Park and then developed in several co-design activities:

- Citizen workshop with adults (15.01.2020)
- Face-to-face meeting with local facilitator (26/01/2020)
- Workshop and walkthrough with citizens and municipal technicians (14/07/2020)

State of the art: The proposal can be developed, namely in the public event "Experimento".

Best Practices and References

Heritage routes in Nantes Nord organised by local associations.

28. Initiative – Culture is also Health

Description

The proposal intends to boost a network of community spaces to promote well-being, inclusion and shared responsibility through art and culture (focusing on themes such as multiculturalism, interdisciplinarity), through:

- different local cultural projects and resources (sharing of knowledge);
- use of digital media to support communication/dissemination and aggregation (enhancing the Campanh'UP platform) to promote an artistic and cultural Local Agenda;
- revitalization of existing public spaces and outdoor facilities.

Positive aspects/challenges

POSITIVE

Creation of a citizens' network to promote cultural actions with an impact on health and well-being;

Possible synergy with other citizens' ideas:

Campanh'up and Educational Living Lab

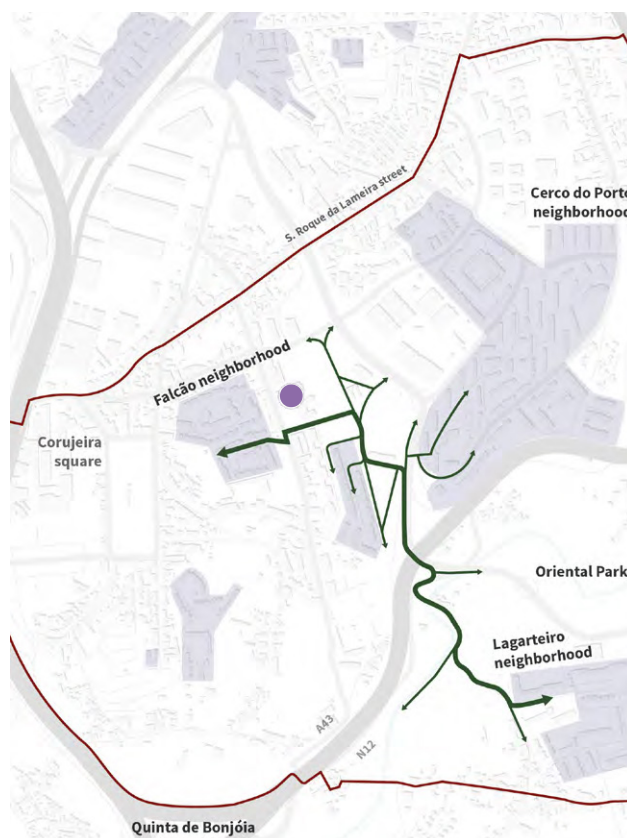
CHALLENGES

- A strategy in the field of culture and sport for the oriental part of the city, is currently under development by the Municipality and other institutions;
- Manage and promote a citizens' network

Participation process to use the NBS

CO-DIAGNOSTIC

The need to create cultural opportunities and participatory activities and to improve literacy for environmental issues was identified in the local diagnostic with several methods and participatory activities.



CO-SELECTION & CO-DESIGN

The initiative Culture is also Health was proposed by a group of teachers and then developed in several co-design activities:

- Online Citizen workshop with adults (17, 23, 25/06/2020)
- Workshop and walkthrough with citizens and municipal technicians (14/07/2020)

State of the art: The proposal can be developed in the frame of the Educational living lab and Campanh'UP

Best Practices and References

N.A.



29. Lagarteiro sports hall renting model improvement

Positive aspects/challenges

POSITIVE

- Increase the use of the sport facility by local inhabitants.

CHALLENGES

- Simplification of the renting process.

Participation process to use the NBS

CO-DIAGNOSTIC

The need for the improvement of community spaces and play areas for children was identified in the local diagnostic with several methods and participatory activities.

CO-SELECTION & CO-DESIGN

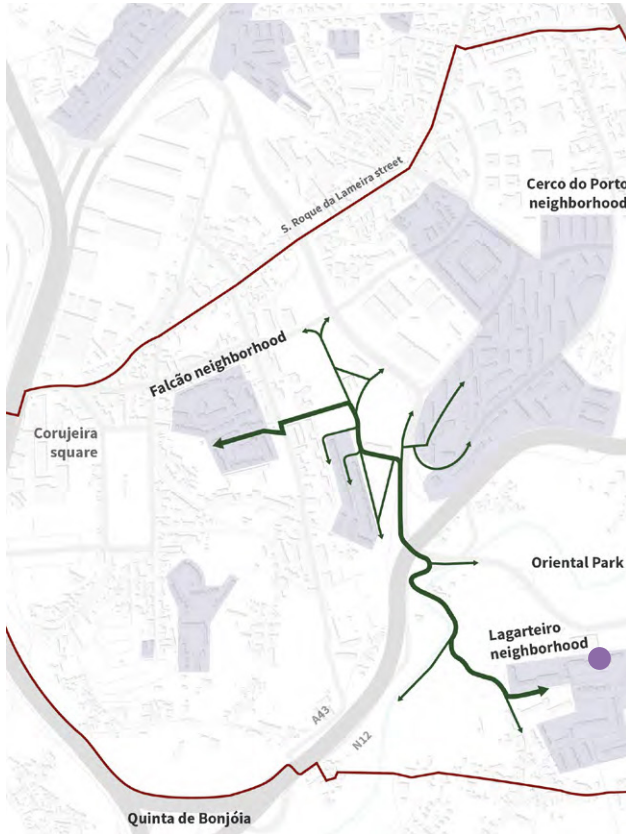
The Lagarteiro sports hall renting model improvement was proposed by a group of citizens, namely by André Sousa, association Norte Vida, and then developed in several participatory activities:

- Face-to-face meeting with local facilitator (21.01.2020)
- Workshop and walkthrough with citizens and municipal technicians (14.07.2020)

State of the art: The proposal will be channelled to specific municipality departments.

Best Practices and References

N.A.



Description

The proposal is associated with the difficulties experienced during the renting process of the Lagarteiro Sports Hall. The associations installed in the building would like to improve the renting model in order to facilitate the organisation of activities, based on the belief that better renting conditions for the local inhabitants would be possible.

30. Artistic Hangar

Description

It was proposed to build a physical structure for cultural dynamics and artistic training, focusing on the formation and development of local culture and art. It was also proposed the development creation of a local agenda, once diagnosed the lack of structures for such artistic and cultural purposes.

Positive aspects/challenges

POSITIVE

- Possible synergy with other citizens' ideas: articulation with other NBS proposals e.g., Nature-based amphitheatre, Campanh'UP, etc.;
- The investment can help to plan and consolidate the healthy corridor;
- Relationship of this proposal with other ideas suggested in the scope of URBiNAT (multifunctionality);
- Possibility to renovate unused spaces with security problems (e.g., existing Ruin of Old Falcão Farmhouse).

CHALLENGES

- The development of this idea in terms of size and function is dependent on the URBiNAT budget or another external to the project;
- It requires a solid plan for sustainable use, maintenance and development, depending on the framework and follow-up given to the initiative by the Municipality.

Participation process to use the NBS

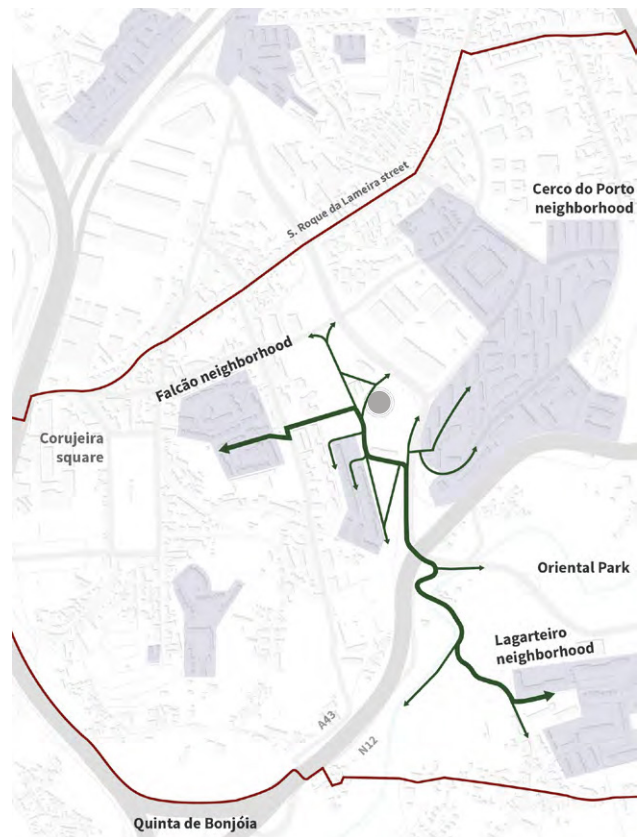
CO-DIAGNOSTIC

The need to improve community spaces to create cultural and entertainment opportunities and participatory activities was identified in the local diagnostic with several methods and participatory activities.

CO-SELECTION & CO-DESIGN

The artistic hangar was proposed by a group of citizens, namely by Carlos Costa, association Visões Úteis, and then developed in several co-design activities:

- Face-to-face meeting with local facilitator (30.01.2020)
- Citizen's video (26.06.2020)
- Workshop and walkthrough with citizens and municipal technicians (14.07.2020)



State of the art: The proposal will not be developed. URBiNAT doesn't have the needed budget to implement this proposed cultural facility. Moreover, this idea proposal was not aligned with the action cultural plan predicted for the area, nor is it answering the real social challenges of the territory.

Best Practices and References

Cultura em Expansão programme, Municipality of Porto

31. Educational Living Lab

Description

The proposal to create an Educational living lab embraces the healthy corridor as an opportunity to an inclusive learning space where interactive and intergenerational activities can be promoted. The interest behind this proposal focuses on creating an intergenerational learning space through *in-situ* experimentation, demonstration and motivation.

Positive aspects/challenges

POSITIVE

- Tool to activate the healthy corridor;
- Possible synergy with other citizens' ideas: Sensory Garden; Nature-based Amphitheatre; Eco-construction activities; and with other municipal educational programs or initiatives such as the curricular additional program *Porto de Crianças* ("Porto of children") with several school activities (e.g. *Políticos por um dia* – "Politicians for a day") or the Environmental Education sessions under the *Ambiente em Família* ("Family Environment") programme.

CHALLENGES

- Dependent on external entities for its activation and development (meaning it is not self-implementable).

Participation process to develop the NBS

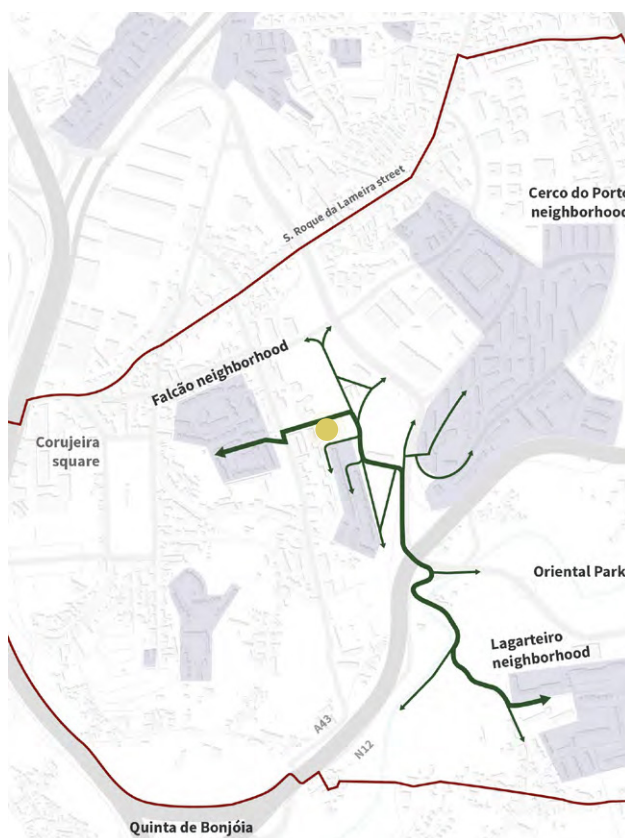
CO-DIAGNOSTIC

The need to improve literacy for environmental issues was identified during the diagnostic activities.

CO-SELECTION & CO-DESIGN

The Educational Living Lab was proposed by teachers of the primary schools and then developed in several participatory activities:

- Online workshop (06.2020)
- Workshop with citizens and municipal technicians (14.07.2020)



State of the art: The proposal is already integrated in the healthy corridor preliminary study. The activities programme can be developed with the teachers of the several primary schools.

Best Practices and References

Environmental Educational Activities organised by the Municipality of Porto (environment Department and São Roque Environment Centre)



32. Eco-construction and urban farming activities

Positive aspects/challenges

POSITIVE

- Citizens involvement in disseminating ancestral techniques and local traditions;
- Promote awareness to the value of local vegetation (cork oak);
- Possible synergy with other citizens' ideas: Campmarket, Campanhã'up.

CHALLENGES

- Need for authorization to boost activities in public space;
- Some activities with specific legal issues: e.g., cork extraction.

Describe participation process to use the NBS

CO-DIAGNOSTIC

The need to improve the local economy, to encourage healthy and traditional food/products, to create community, cultural and participatory opportunities, to respect existing memory and autochthonous plants and trees and, finally, improve literacy for environmental issues was identified in the local diagnostic with several methods and participatory activities.

CO-SELECTION & CO-DESIGN

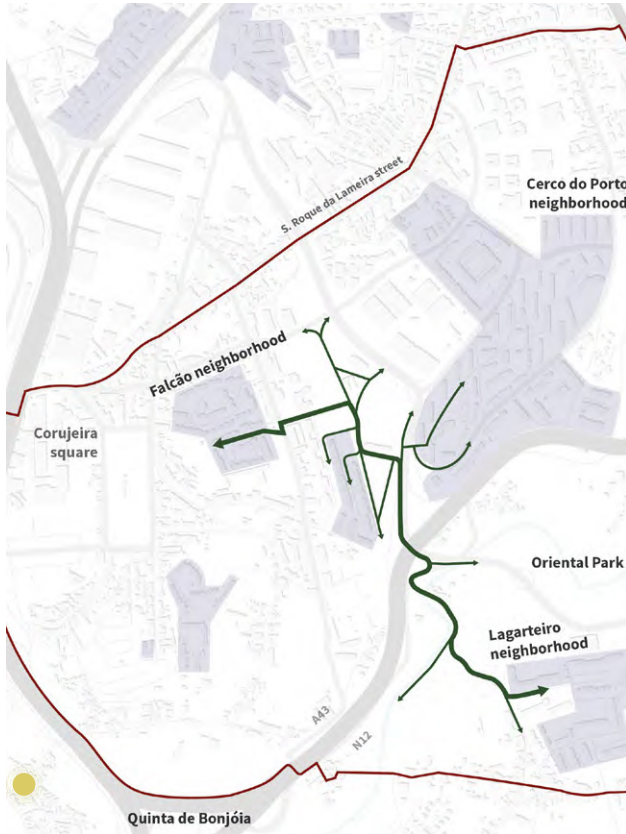
The Eco-construction and urban farming activities was proposed by a group of citizens, namely Nuno Moutinho, *Associação Soalheira*, and then developed in several co-design activities:

- Citizen workshop with adults (15.01.2020)
- Face-to-face meeting with local facilitator (26.01.2020)
- Citizen's video (26.06.2020)
- Workshop and walkthrough with citizens and municipal technicians (14.07.2020)

State of the art: The proposal can be developed, namely in the public event "Experimento".

Best Practices and References

N.A.



Description

The proposal aims to develop Eco-construction and urban farming activities to share knowledge about the landscape and local practices: broom production; cork harvest; planting and mapping cork oaks; tree planting; dynamization of urban gardens; tree climbing, among others.

33. Collective cleaning actions in public spaces

Description

The proposal to organize cleaning actions follows on from several proposals and ideas that were given concerning the Campanhã area because there is a need to raise awareness for the maintenance and cleaning of public spaces. It is intended to carry out collective cleaning and pedagogical and awareness actions on garbage/consumption. This initiative aims to be included in the school's program to be developed.

Positive aspects/challenges

POSITIVE

- Community cleaning as an opportunity to raise public awareness of the issue;
- Possible synergy with other citizens' ideas: Campanh'up, Educational living lab

CHALLENGES

- Implies ensuring security conditions to those involved so that the activity can take place;
- Requires articulation with municipal social action, civil protection and urban cleaning services.

Participation process to use the NBS

CO-DIAGNOSTIC

The need to create community, cultural and participatory opportunities, to respect existing memory and to improve literacy for environmental issues was identified in the local diagnostic with several methods and participatory activities.

CO-SELECTION & CO-DESIGN

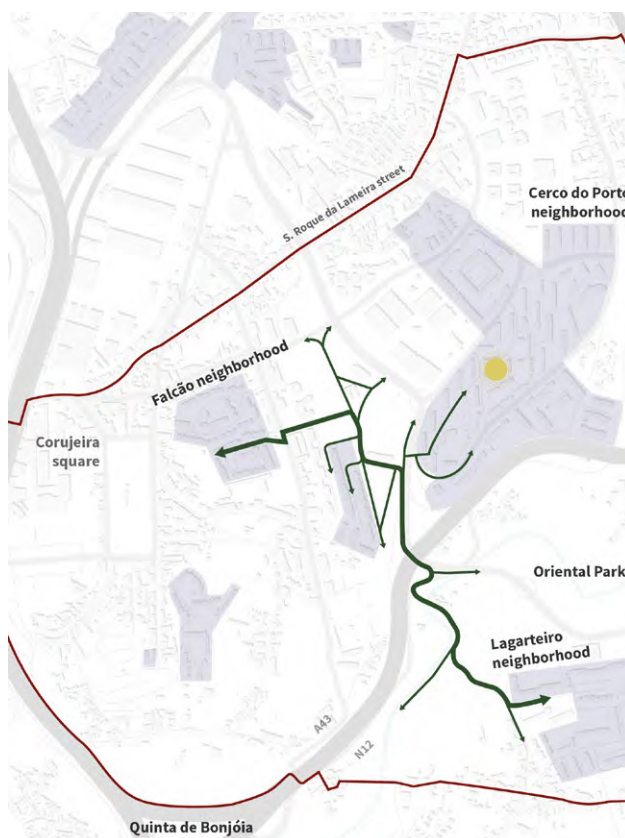
The Collective cleaning actions in public spaces was proposed by a group of citizens, namely pupils and teachers of Cerco do Porto Primary School, and then developed in several co-design activities:

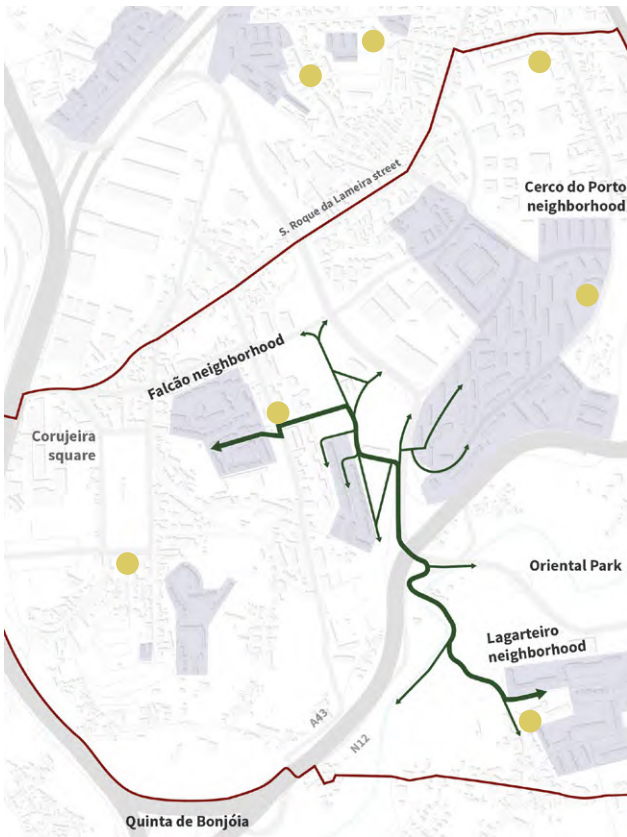
- Cerco do Porto primary school workshop and walkthrough (13.12.2019)
- Citizen workshop with adults (15.01.2020)
- Workshop and walkthrough with citizens and municipal technicians (14.07.2020)

State of the art: The proposal can be developed, namely in the public event "Experimento".

Best Practices and References

N.A.





Description

This proposal to organize Pedagogical farming initiatives in local schools takes into account the relevance of agriculture in urban context. There is a general interest in promoting educational farms in the different schools of the Grouping of *Cerco do Porto*. In this sense, the proposal aims to expand the existing project "*Quintinha Pedagógica*" to every Campanhã primary school to create urban agriculture or gardening solutions.

In addition to the school community, it would be interesting to involve the local community and parents' associations.

Positive aspects/challenges

POSITIVE

- Integration of local partners in the field of training, raising awareness and maintaining the garden;
- Raise awareness to the value of agriculture in school communities;

34. Pedagogical farming initiatives in local schools

- Possible synergy with other citizens' ideas: Community garden; Educational living lab;

CHALLENGES

- Regarding schools in the region: Falcão Primary School already has a plot in *Horta da Oliveira*; Corujeira Primary School has no space available; Cerco do Porto Primary School is very close to the future Pedagogical farm (*Quintinha pedagógica*);
- Several urban gardens distributed over different spaces result in an overload/dispersion of maintenance resources;
- Lack of human resources to ensure the maintenance of equipment and spaces, especially during school vacation periods;
- Nossa Senhora de Campanhã Primary School did not participate in URBiNAT activities

Participation process to use the NBS

CO-DIAGNOSTIC

The need to Improve literacy for environmental and qualified green areas and nature in urban environment issues was identified during the diagnostic activities.

CO-SELECTION & CO-DESIGN

The Pedagogical farming initiatives in local schools was proposed by pupils and teachers of the primary schools and then developed in several co-design activities:

- Corujeira primary school workshop and walkthrough (06.12.2019);
- Cerco do Porto primary school workshop and walkthrough (13.12.2019)
- Falcão primary school workshop and walkthrough (10.01.2020)
- São Roque primary school workshop and walkthrough (24.01.2020)
- Workshop with citizens and municipal technicians (14.07.2020)
- Online meeting with the head teacher and coordinators of Cerco do Porto group of schools and IAAC (14.01.2021)

State of the art: The proposal is being developed in the frame of the technological solutions proposed by IAAC, with the co-design of one NBS per each school, articulated with pedagogical equipment in the schools' playgrounds.

35. Pedagogical equipment in the schools' playgrounds

Description

The proposal aims to provide more/new pedagogical equipment for school's playgrounds, complementing existing ones, that, in some cases are not appropriate for age groups (usually are only fit for younger children). The proposal is part of the existing agenda aimed at investing in schools.

Positive aspects/challenges

POSITIVE

- Provide recess facilities with educational and playful structures;
- Possible synergy with other citizens' ideas: Pedagogical farming initiatives in local schools.

CHALLENGES

- Outside the defined intervention area.

Participation process to use the NBS

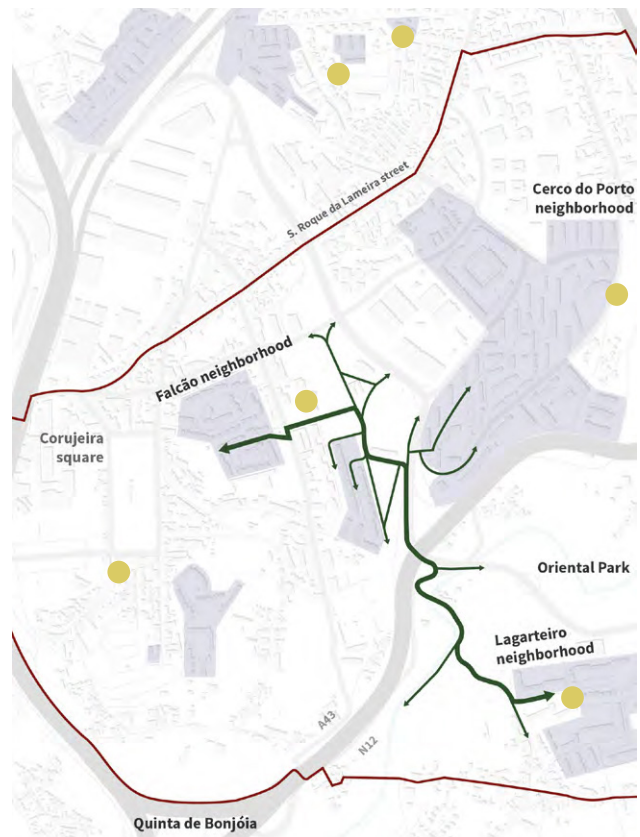
CO-DIAGNOSTIC

The need to qualified green areas, create play areas for children and entertainment opportunities was identified during the diagnostic activities.

CO-SELECTION & CO-DESIGN

The pedagogical equipment in the schools' playgrounds was proposed by pupils and teachers of the primary schools, and then developed in several co-design activities:

- Corujeira primary school workshop and walkthrough (06.12.2019)
- Cerco do Porto primary school workshop and walkthrough (13.12.2019)
- Falcão primary school workshop and walkthrough (10.01.2020)
- São Roque primary school workshop and walkthrough (24.01.2020)
- Workshop with citizens and municipal technicians (14.07.2020)
- Online meeting with the head teacher and coordinators of Cerco do Porto group of schools and IAAC (14.01.2021)



State of the art: The proposal is being developed in the frame of the technological solutions proposed by IAAC, with the co-design of one NBS per each school, articulated with the Pedagogical farming initiatives in local schools.

Best Practices and References

IAAC technological NBS from URBiNAT catalogue



36. Local primary schools playground improvement

Positive aspects/challenges

POSITIVE

- Provide recess facilities with educational and playful structures;
- Offer better conditions of use to students and staff;
- Possible synergy with other citizens' ideas: Pedagogical farming initiatives in local schools.

CHALLENGES

- Outside the defined intervention area.

Participation process to use the NBS

CO-DIAGNOSTIC

The need to qualified green areas, create play areas for children and entertainment opportunities was identified during the diagnostic activities.

CO-SELECTION & CO-DESIGN

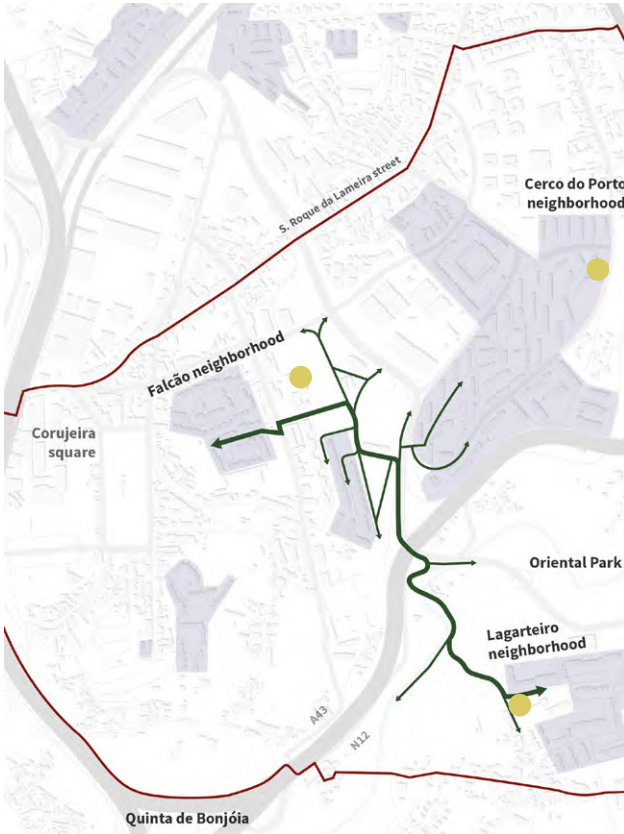
The Local primary school's playground improvement was proposed by pupils and teachers of the primary schools and then developed in several co-design activities:

- Corujeira primary school workshop and walkthrough (06.12.2019)
- Cerco do Porto primary school workshop and walkthrough (13.12.2019)
- Falcão primary school workshop and walkthrough (10.01.2020)
- São Roque primary school workshop and walkthrough (24.01.2020)
- Workshop with citizens and municipal technicians (14.07.2020)

State of the art: The proposal was channelled to other municipality projects.

Best Practices and References

N.A.



Description

This proposal aims to improve local primary schools' playgrounds and is also linked to the lack of pedagogical equipment. It would include: repaint facades, requalify green spaces and existing vegetation, installation of new equipment (drinking fountains, outdoor furniture).

37. Local primary schools access area improvement

Description

This proposal to improve school entrances takes into account the widespread need to rethink school entries in terms of safety for both students, families and staff.

Each school has specific challenges:

- Primary School of Corujeira: Alteration of the entrance to the side street (entrance through the school playground);
- Primary School of Cerco do Porto: Change of entrance to the playground side;
- Primary School of Falcão: Change of entrance due to lack of space on the Falcão Street sidewalk (link with Meeting spot next to Falcão Primary School with sensory garden)

Positive aspects/challenges

POSITIVE

- Provide better accessibility and security conditions to the school community;
- Possible synergy with other citizens' ideas.

CHALLENGES

- Outside the defined intervention area.

Participation process to use the NBS

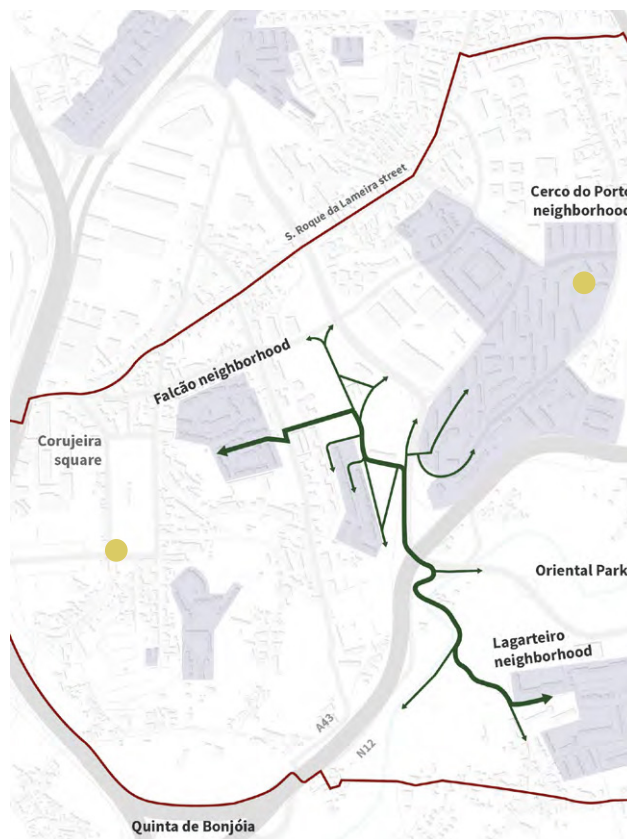
CO-DIAGNOSTIC

The need to qualified green areas, create play areas for children, resting areas and community opportunities was identified during the diagnostic activities.

CO-SELECTION & CO-DESIGN

The Local primary schools access area improvement was proposed by pupils and teachers of the primary schools and then developed in several co-design activities:

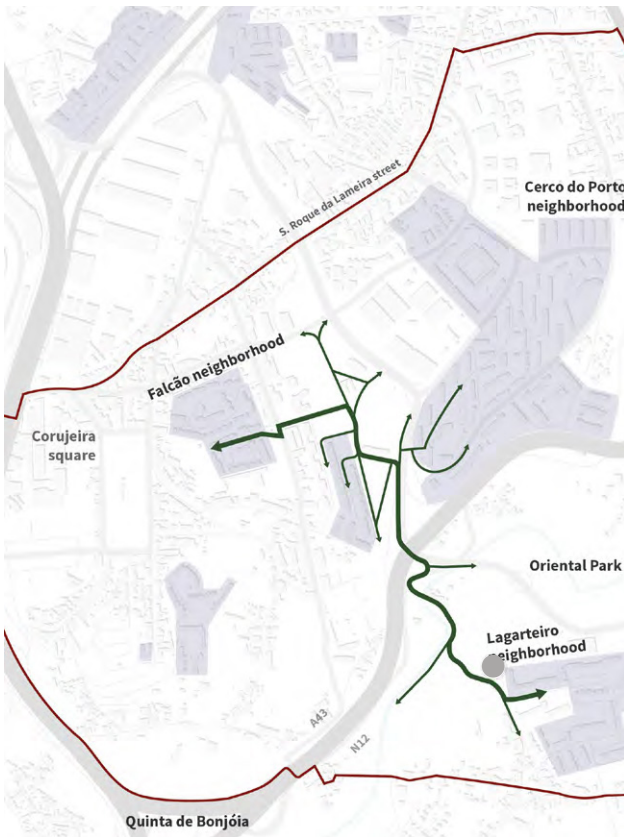
- Corujeira primary school workshop and walkthrough (06/12/2019)
- Cerco do Porto primary school workshop and walkthrough (13/12/2019)
- Falcão primary school workshop and walkthrough (10/01/2020)
- São Roque primary school workshop and walkthrough (24/01/2020)
- Workshop with citizens and municipal technicians (14.07.2020)



State of the art: The proposal was channelled to other municipality projects

Best Practices and References

N.A.



Description

The proposal to create an Environmental Education centre stems from the fact that there is an emerging need to “reprogram” the activities and features of the open space at the end of Rua do Lagarteiro through the creation of a facility (e.g., Environmental Education Centre) that leads to its use and maintenance. The proposed facility – URBiNAT school with an environmental education centre – would create awareness of green and natural spaces while increasing the affluence of people, thereby contributing to increasing the safety of the route/area.

Positive aspects/challenges

POSITIVE

- Responsiveness by the Municipal Environmental Education Service to boost activities;

38. Environmental Education Centre

- Alternatively, environmental activities promoted by the proponents can take place in Lagarteiro Primary School.
- Possible synergy with other citizens' ideas: Urban Garden expansion (*Horta do Oliveira*); Educational living lab, eco-construction.

CHALLENGES

- The implementation of the Environmental Education Centre is not enough to solve the need to reformulate/reform the walkway or the insecurity issues identified in the space. It requires not only intervention in the territory but also in the social scope, demanding a more complex and integrated approach;
- Campanhã parish already has an environmental education centre (*Parque de S. Roque da Lameira*) nearby.

Participation process to use the NBS

CO-DIAGNOSTIC

The need to Improve literacy for environmental issues was identified during the diagnostic activities.

CO-SELECTION & CO-DESIGN

The Environmental Education Centre was proposed by Laurinda and Paulo Lima, association LAgartixa Park, and then developed in several participatory activities:

- Citizen workshop with adults (15.01.2020)
- Face-to- face meeting with local facilitator (26.01.2020)
- Workshop and walkthrough with citizens and municipal technicians (14.07.2020)

State of the art: The proposal is not to be developed because Campanhã parish already has an environmental education centre (*Parque de S. Roque da Lameira*) nearby. Environmental education will be promoted in the frame of the Educational living lab.

Best Practices and References

Environmental Educational Activities organised by the Municipality of Porto (environment Department and São Roque Environment Centre).

