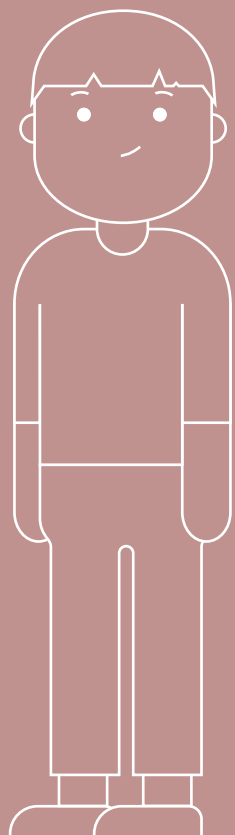
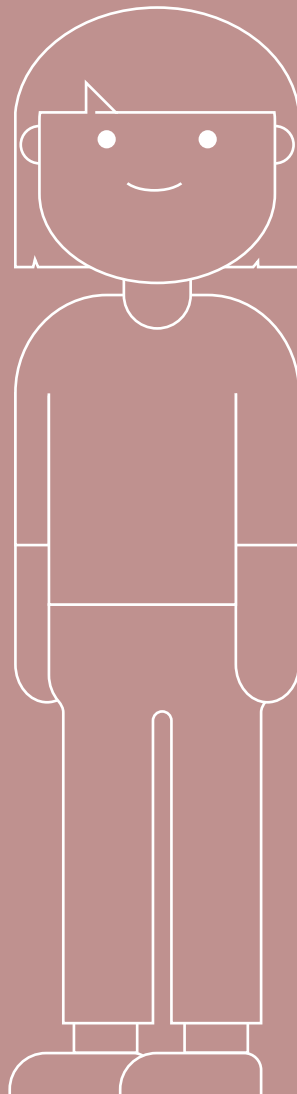
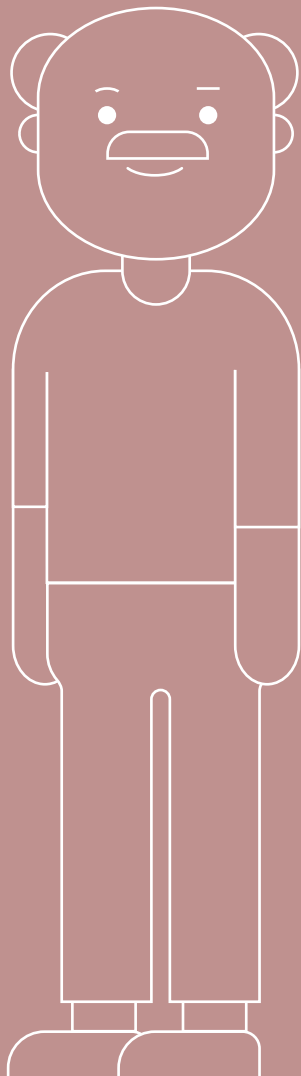
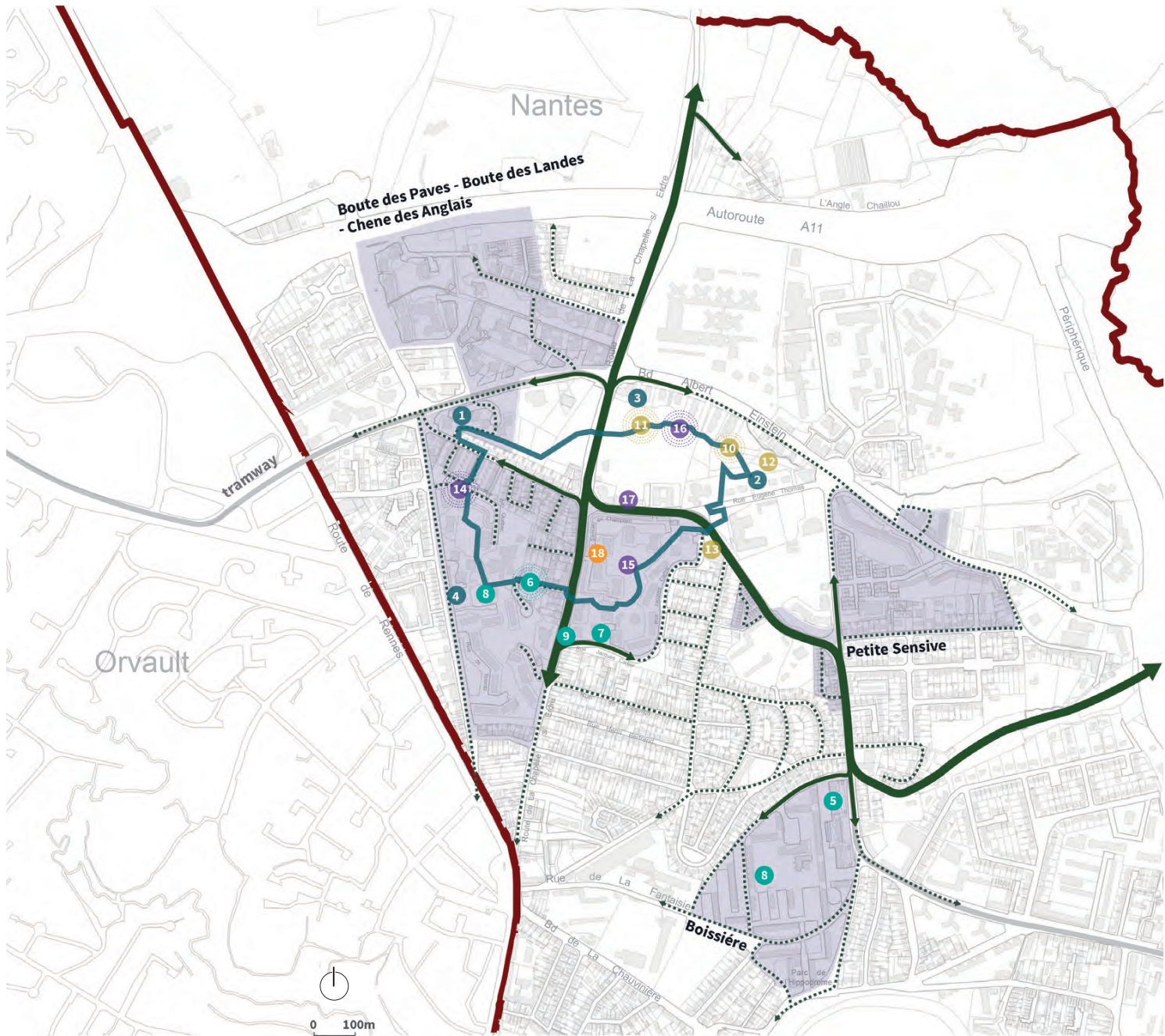


NEW NBS NANTES

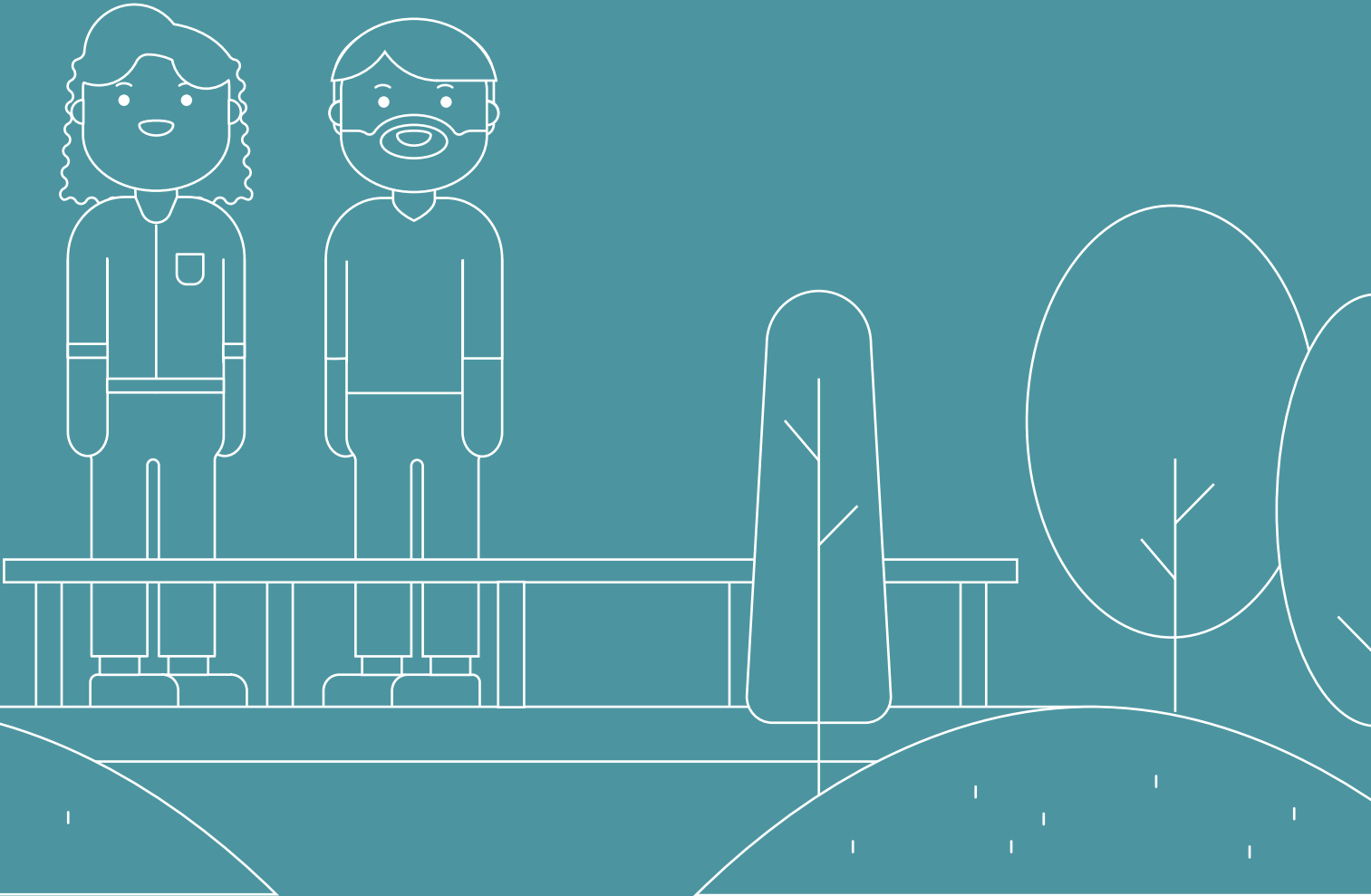
Based on:
URBiNAT D4.2 Healthy
Corridor Concept





Healthy Corridor urban plan.

Public Space





1. The green loop, a walking path within the district

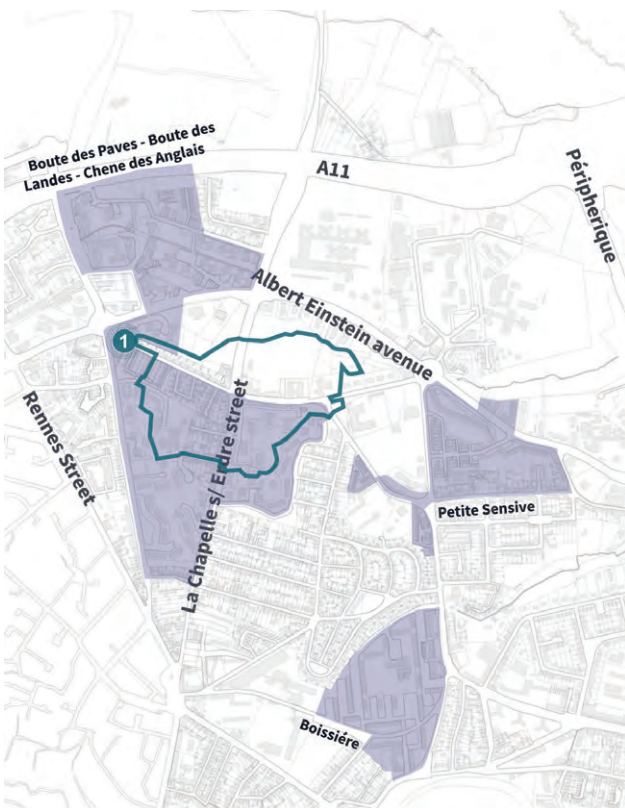
The loop must be physically created, with signs, accessible paths and benches to rest.

Positive aspects/challenges

Once the layout of the loop is physically implemented with accessible paths and adapted signage, the loop becomes a new support for various activities within the healthy corridor for local stakeholders and the municipality. Effective communication must be implemented and stakeholders must also be involved in the co-implementation phase to ensure their engagement.

Co-diagnostic

The green loop was a proposition made by inhabitants in two previous workshops before URBINAT, one carried out on the creation of the health centre (2016) and one on sharing public space (2017). It also made sense within the municipality service of public health that carried out a study with a group of researchers from Toulouse on the social inequalities of health (cf Local Diagnostic)) that underlined those inhabitants of social housing districts are in poorer health. Walking is an activity to promote for the benefit of both physical and mental health. The study also underlined the groups that were most impacted: children, teenagers and the elderly.



Description

The green loop is the first walking loop out of 6 that will connect the different parts of the district Nantes Nord to each other, from the URBINAT study area to the river Erdre. The “URBINAT” green loop will more specifically connect the green spaces and various points of interests within the healthy corridor. It shall also:

- be a support for physical activity such as walking. Expectations may also exist for a more “sports-oriented” approach;
- enhance places linked to the history of the districts, highlighting the geography, fauna and flora, biodiversity;
- allow for relaxation and tranquillity, in the recreational sense of the term;
- accentuate the social role of the loops, which are designed to bring people together or encourage meetings and sharing on the public space.

Co-selection & Co-design

A first workshop took place in May 2019 but with a mitigated success. The task force then decided to engage stakeholders and technicians of the municipality (sport, youth, education) in the process, using two seminars organized by the municipality, one on food and health, the other on social cohesion, to integrate their suggestions and help mobilize the inhabitants they are daily in contact with. The Covid 19 crisis delayed the planned workshop with inhabitants and specific publics. The walkthroughs and face to face interviews inside the bus dedicated to citizen dialogue with a video of the loop took place after the summer, in September and October 2020 and allowed to both map the improvements needed on public space (benches, accessibility issues ...) to physically design the loop and collect wishes and dreams for the activities.

2. Continuity of walking paths

Description

Nantes Nord benefits from an adapted pedestrian network as the territorial mapping underlined in the Local Diagnostic. In the park Amande though, there is no direct connection to the social housing district as the informal paths in the park underline. The Park is not easily accessible from the social housing district for families with strollers or for inhabitants with reduced mobility. A retirement home is located directly next to the park, so accessibility is an important factor.

Though, the park is also labelled Ecojardin (<https://www.label-ecojardin.fr/fr/sites-labellises/parc-de-lamande>), so the soil permeability must be limited. The municipality team is looking for a solution that matches accessibility and the preservation of green spaces.

Pedestrian crossings need to be secured as they were identified by the inhabitants as dangerous. Some accesses are difficult and need to be improved.

Positive aspects/challenges

The Park Amande was awarded Ecojardin label and a consensus will have to be found between the need to link the park to the social housing district and the preservation of the environment. Slope and trees planted along the pathway will require an exchange between the different services of the municipality to find the most suitable solution allowing accessibility to as many people as possible while preserving plant species and especially trees whose roots could be damaged.

The works on the securitisation of the pedestrian crossings will need to integrate a nature component to fit into the landscape and contribute to the identity of the green loop.

Co-diagnostic

Territorial analysis and mapping the existing streets allowed to identify the informal paths.



Co-selection & Co-design

Walkthrough allowed to experience the paths and make an on-site diagnostic. The diversity of participants (a mother with 2 children and a baby in a stroller, a woman who had difficulties to walk...) have highlighted the problems of accessibility and the difficulty of reaching the social housing district once in the park Amande.

Most of the contributions from the inhabitants concerned the diagnosis of accessibility. The municipality's technicians will take over the technical study to make propositions on solutions.



3. Make the Amande park visible

Positive aspects/challenges

A great natural space to preserve, but also to connect to the district so that the inhabitants can actually benefit from such a breathing space in a highly urbanised area.

An important coordination is needed with the urbanist in charge of the global project that will impact the public space in front of the entrances of the park. A study on hydrology will be accessible at the end of the summer and may impact the layout of the path.

Co-diagnostic

Behavioural mapping underlined that despite frequent passage in front of the entrance to the park due to the presence of the tramway station, schools, the community centre and the media library, very few people enter the park, which is almost not visible from the street.

Co-selection & Co-design

Walkthrough: some participants, who live in the district within walking distance of the park, didn't know its existence and discovered it during the walkthrough. They underlined that the entrance of the park has no sign, but also no landscaping elements guiding the inhabitants to the park.



Description

The Amande Park is a green space of more than 6 hectares managed under ecological management since its beginning. It has been developed as a green corridor and holds a great diversity of flora and fauna. The Amande park is made up of storm pools collecting rainwater but not connected, and a small stream Botardière. A school, two sports fields, a retirement home, the community centre and the media library are located around this green space and make it almost invisible from the housing district. Two entrances, without sign and accessible path, "links" the park to the housing district.

4. Multifunctional urban park: Canada park

Description

The Canada Park is one of the first public space to be transformed, giving the inhabitants an idea of what the district will look like at the end of the global project in 2030.

The ambition is to create a unifying public space where everyone, regardless of age and gender, will have an interest in occupying it, allowing for encounters and exchanges between inhabitants.

Moreover, this place had no identity, no name, and no consistency in the equipment. This site was relatively little occupied, and sometimes by individuals linked to traffic. Only the City-stadium is a real place of gathering and exchange, despite its past appearance and a ground that does not satisfy its users.

The renewal of the place will allow to consider water cycle, since, as part of the global project, the objective was set to go out of the pipe system and manage the water cycle via a knot system.

Positive aspects/challenges

Multifunctional space that allows sharing of public space and increased social cohesion.

Challenge on the productive space: get inhabitants involved in the long term to maintain the site.

Co-diagnostic

The diagnostic of the site is a mix of several elements: feedback from the inhabitants, cultural mapping on gender issues carried out by an association of teenagers and report of the citizen's council. The inhabitants described the children's playgrounds as unsuitable and unsafe, have reported drug dealing and a need for a global requalification of the site.

Two suggestion boxes were available for six weeks that was the start for discussions in the first workshop.

Co-selection & Co-design

Several workshops took place, mostly directly on site with the citizen bus, since 2017. After the first workshop dedicated to the expression of needs and diagnostic of the site, workshops defined the specific publics or the specific challenges of the site to achieve a multifunctional park.

The debate in the district on the place of women and girls in public spaces led to the



conclusion that women are absent from public spaces until they become mothers and watch over their children there. A specific workshop with attention to girls led to their wishes to integrate swings on the park.

The swings are games that appeal to children of a large age group, there was a need for the youngest and especially the 0-3 years old, a lack of games for this age has been identified by the Citizen's Council of the district.

The construction of the boulodrome will respond to a long-standing request from a local resident, who wanted children to see adults playing in the public space.

Many children asked for a circuit to play with their scooters, hoverboards and other rollerblades. A pump-track is planned on the site. An on-site workshop in May 2021 is planned to discuss with children the design of the pump-track.

The Park will also host a place for cultivating vegetables and a green area that will allow gathering and animations.

For forwarding

Park Amande

During the walkthroughs, several propositions concerned the park Amande, but with very different wishes for the space. Some inhabitants wanted to preserve the serenity of the park by limiting the works, others wished to enlarge the storm pool so that water could be more visible, some people wished for the opening of the park by the sports ground, others not.

The local task force decided that the place being large, specific workshops will need to be organised in the park Amande in order to deepen the proposals. The COVID 19 crisis had disrupted the workshops planned by the municipality and in view of the difficulty of the inhabitants to get involved in this difficult period, it was decided to postpone these workshops and to continue this work within the framework of the global project.

The Amande park is indeed central in the renewal of the district in the global project.

Lighting of the football field next to the Dragon playground

Street lighting is a strong issue in the district.

A lighting plan has been developed for the whole city and an intervention at district level is planned as part of the global project. This light plan must indeed be integrated with the black grid developed by the city's green spaces department that aims to develop a night-time ecological corridor without light pollution.

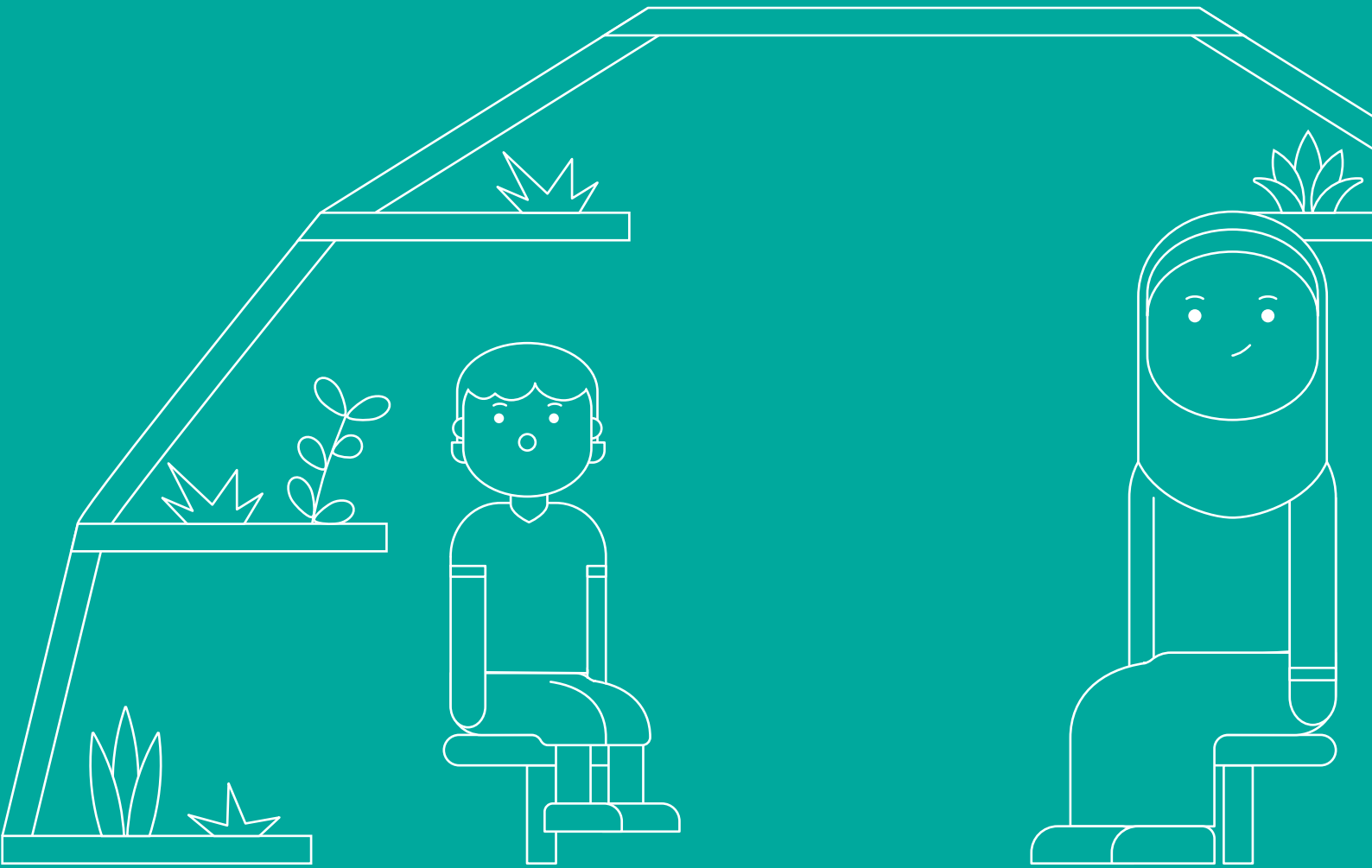
Danger of passing through the Coulée road (blind bend): passing the loop through the Vanille Chocolat kindergarten?

During the walkthrough, several inhabitants noted the dangerousness of the coulée street and proposed to deviate the route of the loop through the kindergarten. However, the global project plans to profoundly transform the path through the kindergarten. Therefore, the passage through Rue de la Coulée is the provisional route, pending the completion of work around the kindergarten. It is then planned that the loop route will indeed pass close to the kindergarten.

Accessibility issue in front of the Quebec Street with car parks and works

Work on the high-rise residential towers on Québec Street has already begun and is temporarily affecting the route of the loop.

Nature and Food production





5. Reopening of the stream

Description

The Renards stream is one of the last affluents on the right bank of the river Gesvres located in the most urbanised part of the watershed (northern districts of the city of Nantes “Bout des Pavés”, “Chêne des Anglais”). It is an integral part of the body of water WFD FRGR0541 entitled “THE GESVRES AND ITS AFFLUENTS FROM THE SOURCE TO CONFLUENCE WITH THE ERDRE” which is located in the Erdre catchment area.

The “Gesvres” water body has a medium ecological status with regard to the Water Department of the municipality (data from the water station located on Vigneux de Bretagne, ecological status 2013). The main causes of the medium quality of the water body are macro-pollutants, morphology and hydrology.

As for the Ruisseau des Renards, it is pumped over 545 ml from its source before being in the open air until its confluence with the Gesvres. There is currently no data on the quality of the water and aquatic environments of this stream and no data on its hydrological functioning.

The inhabitants will be associated in the studies to engage them in the project and prepare the co-design phase that will take place in another EU funded project (Life Revers’eau) in 2025.

Positive aspects/challenges

IRSTV and the department of water cycle will carry on the necessary studies on the quality of water. The aim is to include citizens and schools or associations to participate to the follow up of the indicators.

Co-diagnostic

The project is at first a municipality project, that aims to regain the presence of water in this district. The co-diagnostic will be held within URBiNAT on the quality of the water with the inhabitants, and will also be a phase of engagement of inhabitants for the future of the project. The second phase, the reopening of the stream and the design of the space, will be held within the global project and the Life Revers’eau project.

Co-selection & Co-design

n/a



6. Planting and picking within the green loop

Description

The COVID 19 crisis made it more difficult for the inhabitants to feed themselves, and their desire to have access to local food has also increased. This was reflected in the walkthroughs that were organized, where the inhabitants asked to be able to peck or pick fruit along the loop.

Positive aspects/challenges

Positive impact on health, raise awareness on healthy food.

Difficulty of maintenance with gardeners who are already understaffed

Co-diagnostic

The Local diagnostic underlined the municipality strategy to create a connection between the market gardening farm at the edge of the district and the social housing district. Several initiatives around the production of food have been proposed by local stakeholders and the walkthrough underlined that the food production meets the wishes of the inhabitants.

Moreover, the walkthrough has shown that being able to pick fruit on the way can be a source of motivation for walking (as a physical activity).

Co-selection & Co-design

What to plant and where still needs to be discussed with the inhabitants.





7. Geodesic greenhouse

Description

Bio-T-Full's is an association created in 2015, member of the Ecosolies network, whose ambition is to develop and promote urban agriculture in all its forms and at all scales.

In particular, the association proposes citizen and popular education activities around the transmission of knowledge, in connection with edible plants, sustainable food, natural gardening, or even DIY...

Bio-T-Full is also committed to supporting projects with actors wishing to get involved in the heart of issues related to sustainable development, solidarity and cities in transition. They work with the municipality on the district Nantes Nord to organize workshops with the inhabitants on gardening. They take part in two projects: the geodesic greenhouse and the experimental nursery on the rooftop greenhouse (solution 9).

This geodesic greenhouse project will be implemented on the ground, next to the building with the rooftop greenhouse and will host several events around gardening. The association in charge of the implementation of the geodesic greenhouse is also the one coordinating the solution 9 Experimental district nursery (young shoots)

Positive aspects/challenges

A physical place for events around food and gardening.

The challenge is to create a district dynamic around gardening that will irrigate the several other projects on food production in the district.

Co-diagnostic

The Local Diagnostic underlined that the district is already a place for food production. It has a history as a market gardening land. The aim was not to extend the existing family gardens but create a diversity of gardening/agricultural practices.

Co-selection & Co-design

The walkthrough with the inhabitants confirmed their interest in the food topic. The association will program events and workshops on gardening in the geodesic greenhouse, supporting the territorial dynamics around the topic of food.



8. Solidarity gardens

Description

The solidarity gardens are the continuation of the project carried out by the green spaces department at the end of the first lock down in May 2020. The idea is to plant in each district a solidarity plot of land that will be maintained by associations and residents and whose production will be distributed by the associations and the communal social action centre to the most disadvantaged.

Positive aspects/challenges

The green spaces unit has already transformed large areas into production spaces. This large-scale project has required a strong investment from the municipality's gardeners who are not market gardeners, but this solidarity project has federated the teams around a project that makes sense. It has also strengthened the links between the municipality and the associations working in the field of food solidarity.

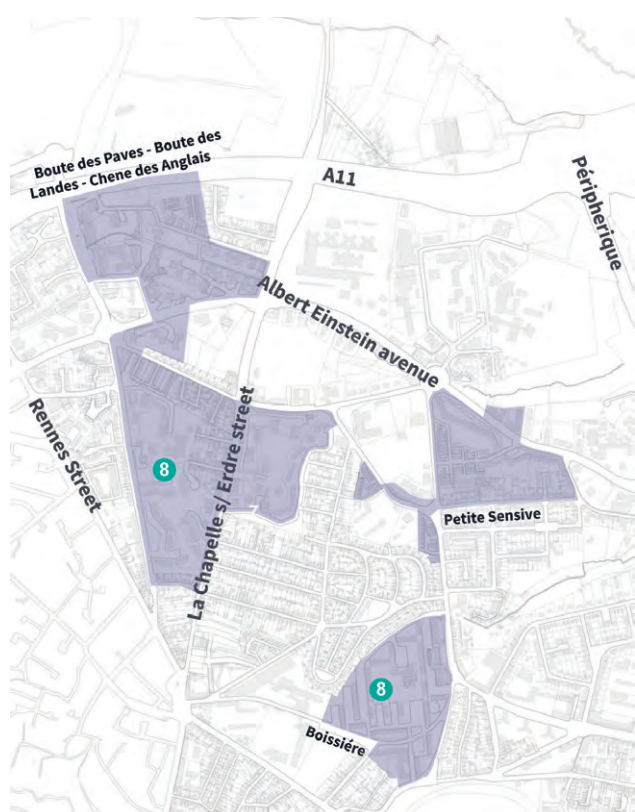
The challenge: create a long-term dynamic.

Co-diagnostic

The project is first and foremost a large-scale experiment and an urgent response to the consequences of the health crisis on the city's poorest households. The objective is to structure the project and systematize the actors and the processes. Meetings with the associations have helped to identify the points to be improved, in particular the participation of the inhabitants in the planting and larger plots to increase production. Each district should have one large plot with associations helping to make the connection with the inhabitants.

Co-selection & Co-design

Associations, technicians and inhabitants have suggested two plots in the district to the municipality instead of one as initially asked. Instruction still ongoing for the whole city.





9. Experimental district nursery (young shoots) in the rooftop greenhouse



Description

The project of the greenhouse is managed by the social housing landlord seeking innovative solutions to reduce the environmental footprint of its buildings while limiting the cost of energy for tenants.

Symbiose is an innovative solution that aims to recover heat from the greenhouse installed on the flat roof of existing buildings to heat domestic hot water. The greenhouse project is financed by local, national and EU funds.

In addition, this greenhouse offers a new volume to use. Initially planned for the use of the inhabitants of the building, they did not show interest in the place. The social housing landlord contacted the municipality to study the possibility of creating a place for a farmer. Though, study has shown that the place was not big enough to allow a production from which a farmer would live.

With the help of two stakeholders, the association Bio-t-Full and the chamber of agriculture, it was decided to launch an experimental nursery, allowing to evaluate the economic potential for a farmer in the future, and a place for experiments for students.

The local secondary school has already shown interest in visiting the facility and using it with their students.

Positive aspects/challenges

Positive aspects: a project with impact on education as well and potentially on the economy if the experiment leads to an economically viable agricultural place. Challenge: potential delay in the delivery of the greenhouse which would have an impact on the uses.

Co-diagnostic

The diagnostic was led by the association Bio-t-Full, the department for the development of urban agriculture of the municipality, the local district team and of course the social landlord who owns the building to define the strategy to adopt and the specific objectives for the greenhouse. The greenhouse was perfectly in line with the territorial dynamics supported by the municipality.

Co-selection & Co-design

All the partners involved in the project of Symbiose suggested to create an experimental place for a nursery of young shoots, with two objectives: a place dedicated to students, and experimentation to evaluate the economic potential for a farmer.

For forwarding

works to reopen the stream les Renards

The opening of the stream will need to be authorized with compulsory studies to be carried out. Regarding the delays, it has been suggested to postpone the opening of the stream les Renards after the URBiNAT project, within another Eu-funded Life project that has been accepted: Revers'eau, and in link with the global project.

Not forwarded

bamboo plantation

The planting of a non-endemic species is not envisaged, especially as bamboo is a highly invasive species.

10. Education on local fauna and flora

Description

Nantes Nord is one of the greenest districts of Nantes. Though, the green spaces are either not qualified, or they are not known by the inhabitants. For the municipality, this proposal can also impact the belonging feeling of the inhabitants, by highlighting its assets.

The 2 primary schools of the healthy corridor, including the school that participated in the IRSTV workshops on water, soil and air, and the secondary school, whose biology teacher from the Stendhal college showed interest in the proposition.

Positive aspects/challenges

Strong connections on this initial proposal of inhabitants to include the schools of the district and to integrate the secondary school students in the URBiNAT dynamic, especially for the co-implementation.

Co-diagnostic

During the walkthrough, the inhabitants shared their wishes to get to know their environment, especially the fauna and flora that surrounds them. This is also related to solution 11 on the history of the district, because few inhabitants know that the Nantes Nord district is one of the greenest in Nantes and that before the 1950s, there were market gardens whose tree lines still show traces of the boundaries of these farms.

Co-selection & Co-design

The proposal was the result of several subsequent requests from inhabitants, confirmed during the walkthrough with the inhabitants, workshops conducted by IRSTV and exchanges with the Stendhal college. It allows for joint work with young people from the district who attend secondary school and who are not always easy to integrate into the co-creation workshops on the district.





11. History of the district

Description

The Nantes Nord district is going to change profoundly between now and 2030. The Global project, a €135 million urban renewal project financed in part by national funds (Agence Nationale de Renouveau Urbain) will contribute to the renovation of social housing, public spaces and the living environment of the inhabitants.

The objective is to rediscover the history of the district, by rediscovering the landscape and in particular the presence of water, which the urbanisation of the district has completely removed over the years.

The inhabitants, who are often older, have expressed the wish to be able to reconnect with the history of the district in Nantes Nord.

Positive aspects/challenges

Proposal that may have an impact on the greater sense of ownership of inhabitants of the district

Co-diagnostic

Several diagnostics conducted in the district revealed the lack of belonging of inhabitants of Nantes Nord: a social diagnostic conducted in the specific social housing buildings of Canada and tower 3 and 5 of Québec, the GUSP diagnostic conducted every 2 years (last one in 2019)

Co-selection & Co-design

Workshops and discussions with local stakeholders will be proposed to co-create the solution that will support the sharing about the history of the district. Cultural mapping could be used, as well as a digital enabler.



12. Exhibition on the Amande Park by Stendhal Secondary School



Source: Photo exhibition, Nature reserve of Nalliers (85)
author unknown

Description

In the frame of the school life councils (CVC), teachers and pupils of the Stendhal secondary school implement different projects in parallel of regular pedagogic program.

Initiated by pupils and biology teacher, one of these projects aims to study vegetation and fauna in the surroundings of the secondary school. As result of this work, and exhibition can be organized on the Amande Park.

Positive aspects/challenges

This proposition address both educational and biodiversity challenges and target two publics (pupils and inhabitants)

Co-diagnostic

2 preliminary meetings with the secondary school with a presentation of the project to the pupils by Céline Henry, coordinator of youth actions at the municipality.





Crédit photo: Nature Québec

13. Outdoor classroom of the Secondary School Stendhal



Description

The Stendhal secondary school has created a vegetable garden in the schoolyard which the students take care of during breaks and which is the subject of work in biology and technology classes. In view of its success, the teachers wish to develop this space as a real classroom that can accommodate 24 seated pupils. For their part, the pupils would like to have a relaxing area where they can sit, near the vegetable garden.

Two solutions from the NBS catalogue seem to meet these wishes: the mobile vegetable garden and the food production and leisure pavilion. A meeting has yet to take place with the county since the land does not belong to the municipality but to the county, in order to get the final agreement. The technical instruction is not finished yet.

Positive aspects/challenges

An outdoor area which will also be open to the public during the events organised by the secondary school 3 to 4 times a year.

Challenges: the leisure pavilion is a complex structure, that will need more administrative procedures such as a building permit, county authorisation, supervision by an architect, etc. The division of responsibilities has not yet been totally clarified.

It is not located on municipality land but on county land.

Co-diagnostic

2 preliminary meetings with the secondary school with a presentation of the project to the pupils by Céline Henry, coordinator of youth actions at the municipality.

Co-selection & Co-design

The teaching project must yet be further developed, in parallel with the technical instruction going on to validate the adequate solution out of the two pre-selected. Co-design workshops are planned with the partner IAAC.

